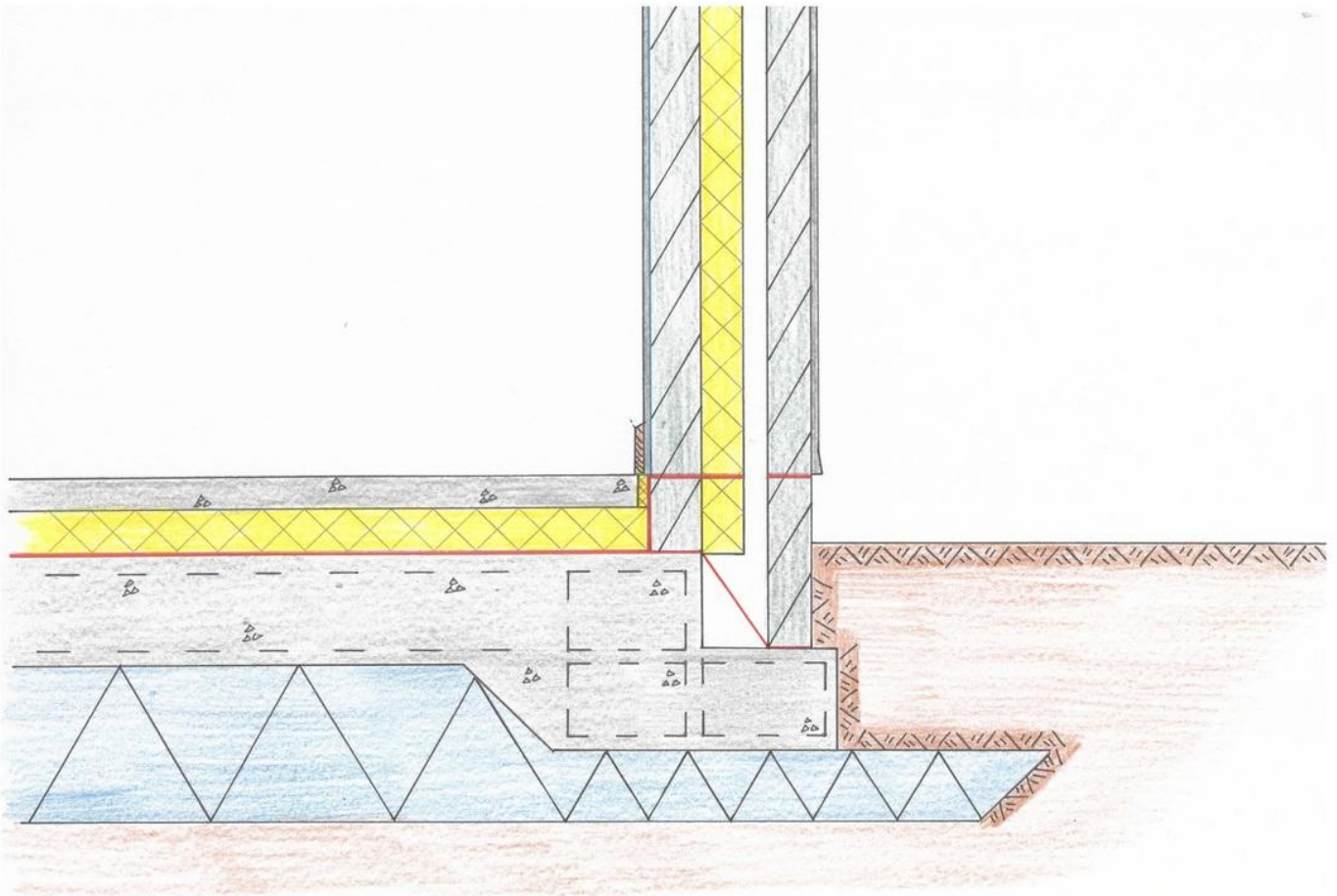
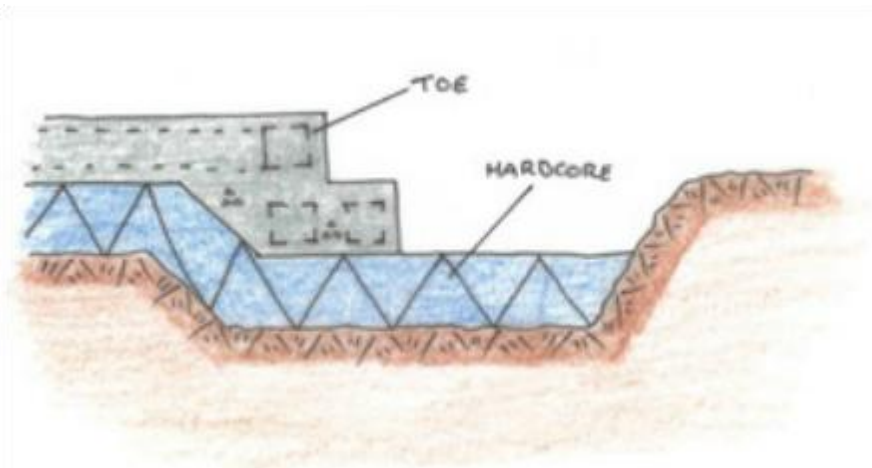


Raft Foundation



The concrete raft is supported on a compacted hardcore base which extends out past the edge of the raft.

The edge of the raft is stepped, creating a toe, which allows the outer leaf of the wall to continue belowground level.

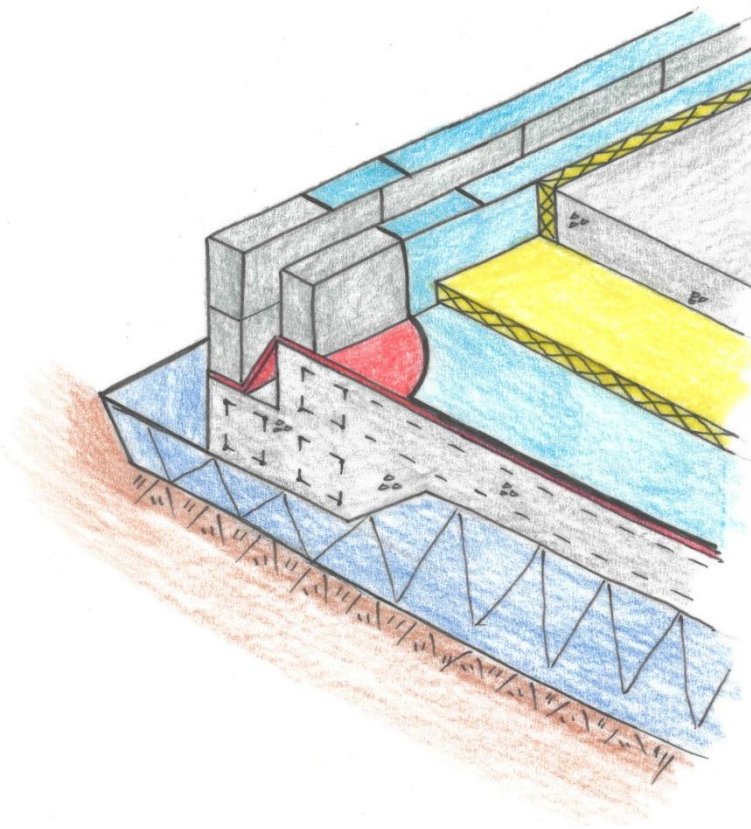


It is vital that the concrete slab is strengthened by the use of steel reinforcement.

A radon barrier is installed to form a continuous seal on the entire footprint of the house.

A Damp Proof Course is installed in order to repel any rising moisture. It is vital that the DPC is carried up into the blockwork to form a water tight seal over the entire floor area.

The DPC must run through the blockwork at a minimum of 150mm above finished ground level.



100mm of rigid insulation is installed below the finished floor to ensure that there is no heat lost through the foundation.

75mm concrete screed then provides the finished floor.