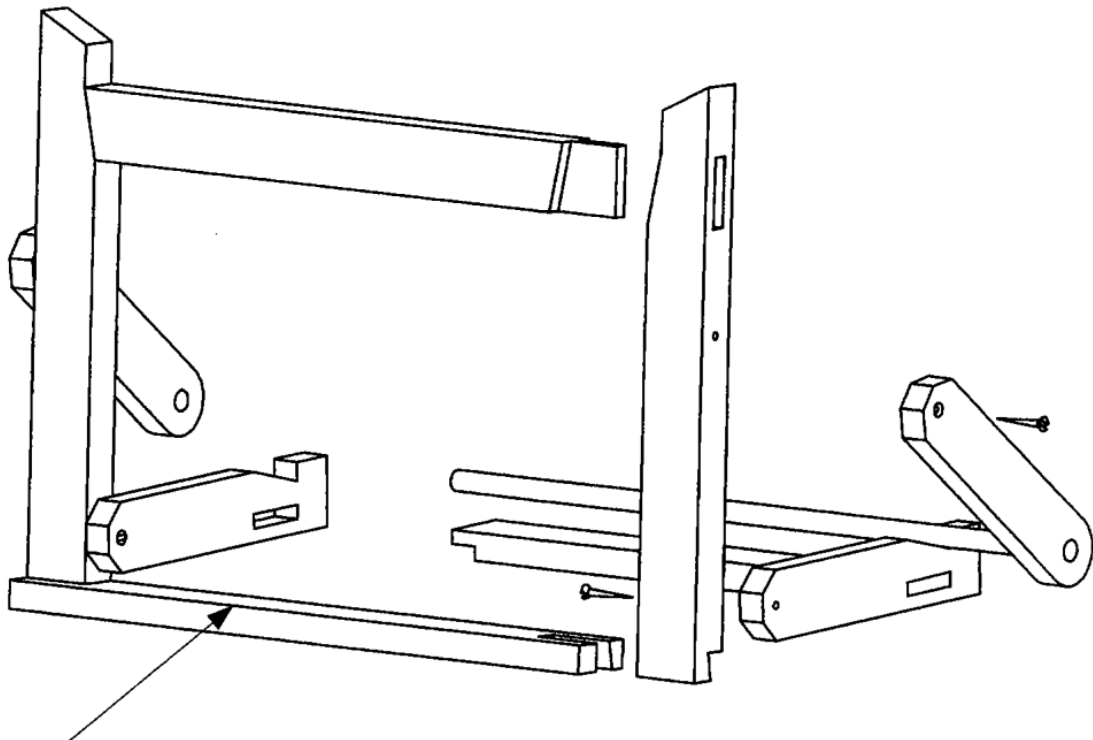


CONSTRUCTIONSTUDIES.IE

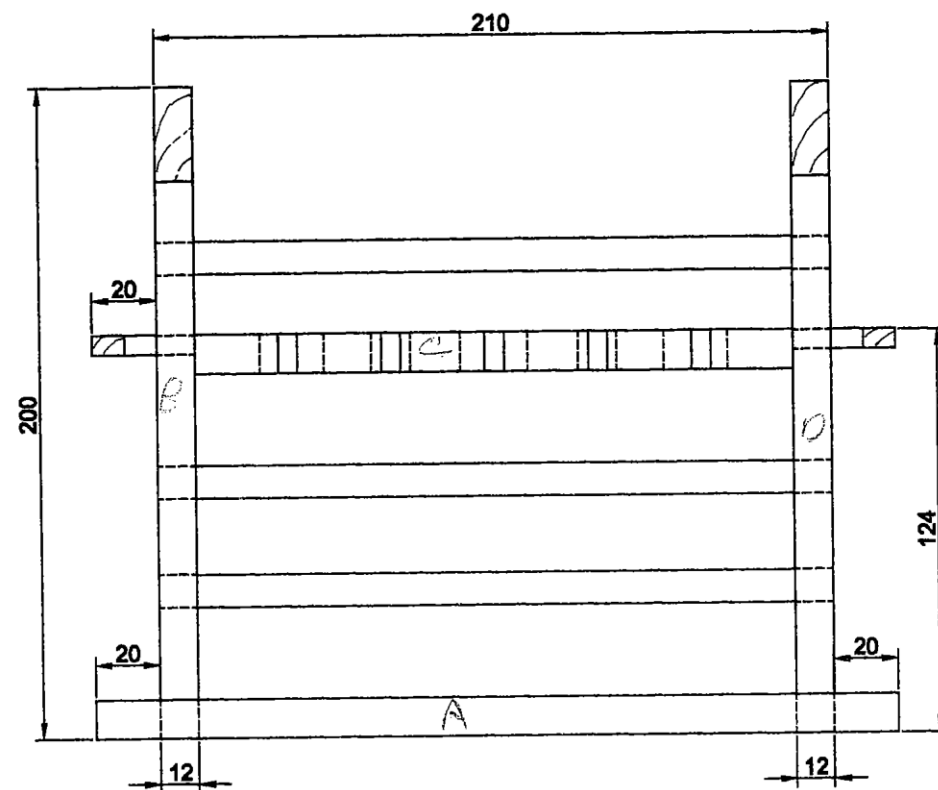
Leaving Certificate Revision Notes

Past Practical Exams 2000-2010

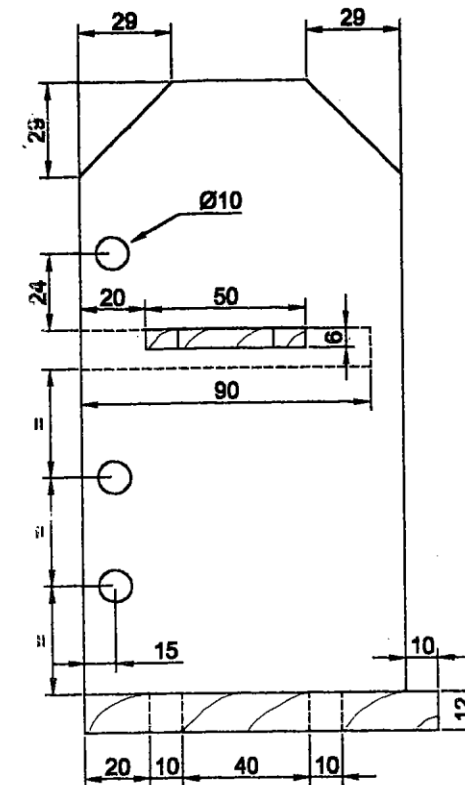


2000

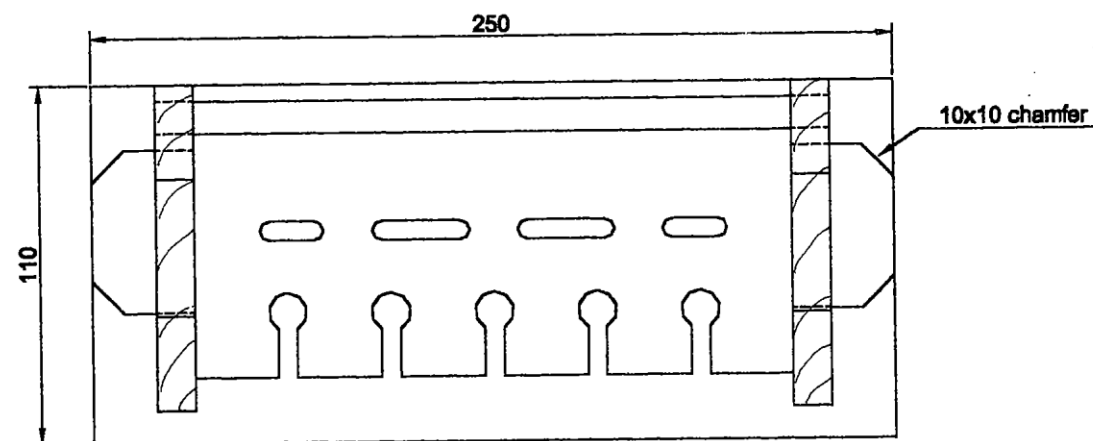
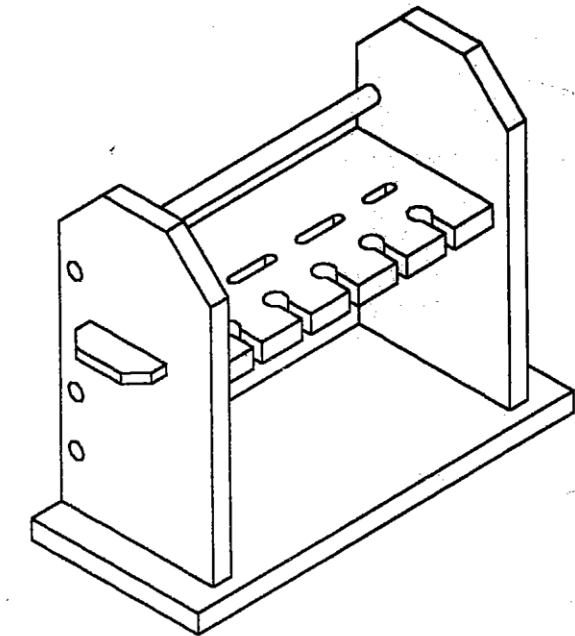
Sealbhoir do Sceanra/Cutlery Holder



Elevation/Aghaidhchló

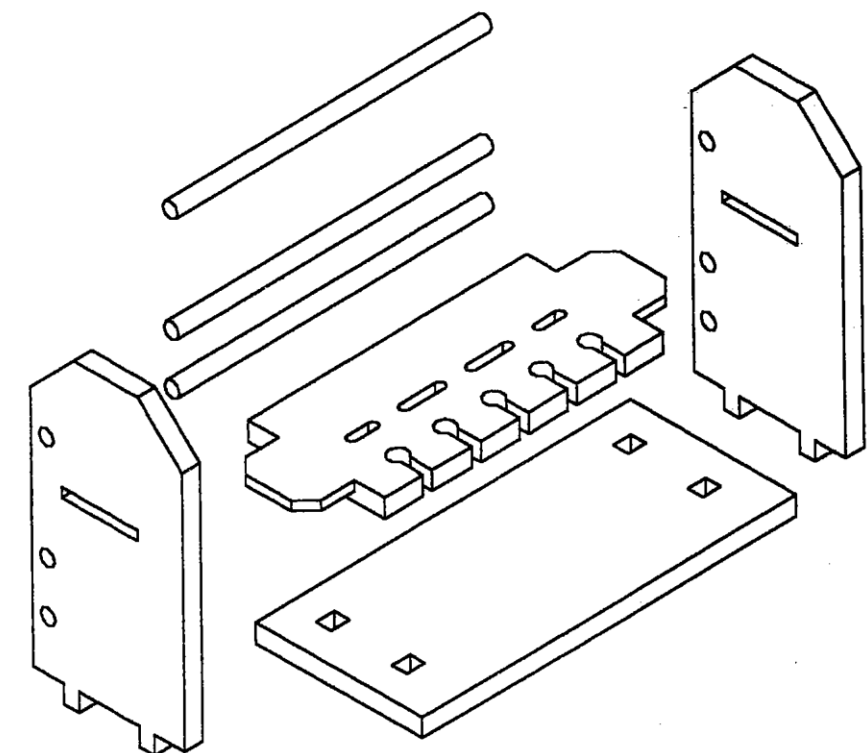


End Elevation/Taobhchló



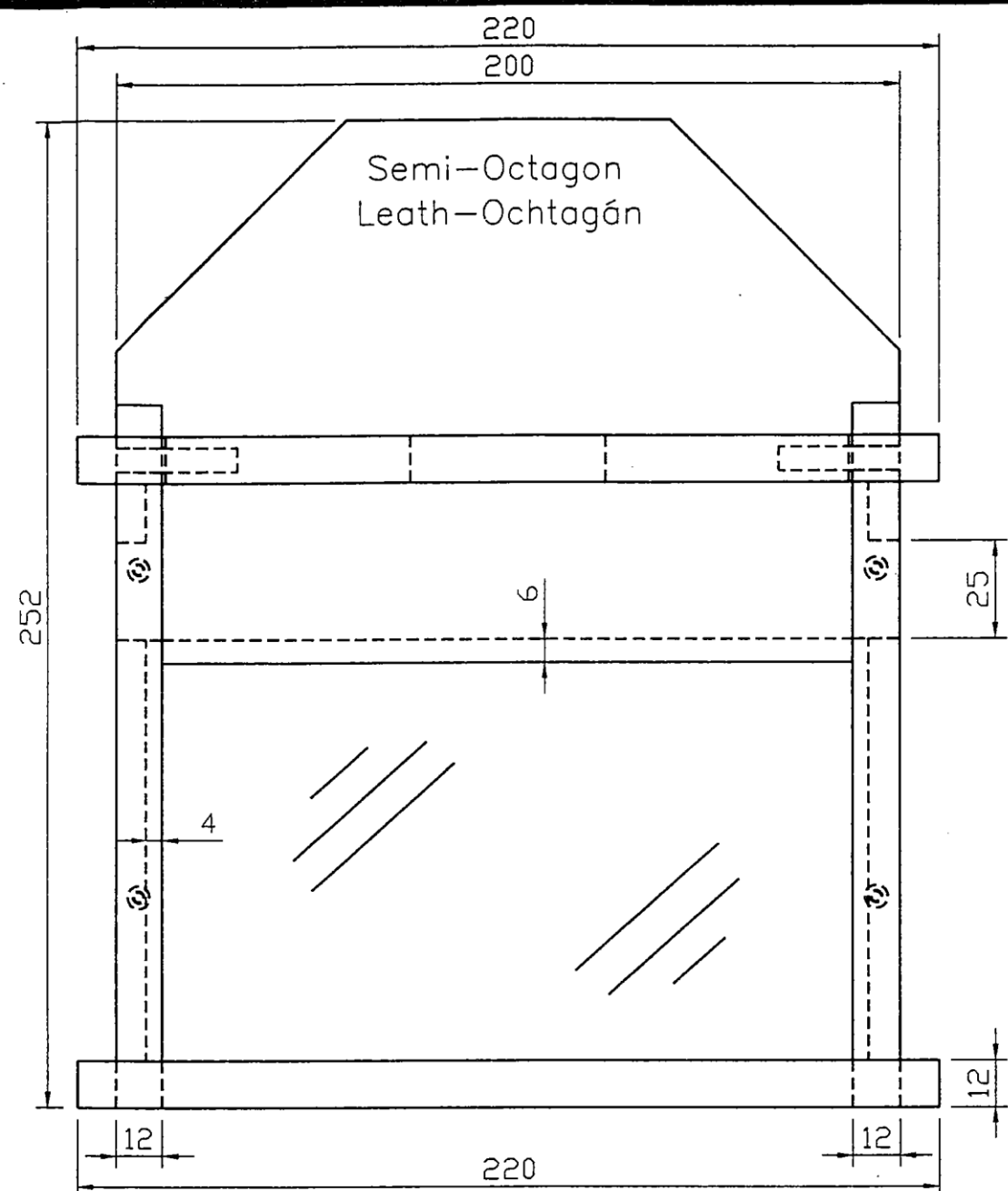
Plan/Bunchló

Shaping to edge of base is left to student
Fágfar cruth imeall an bhoinn faoinn dalta.

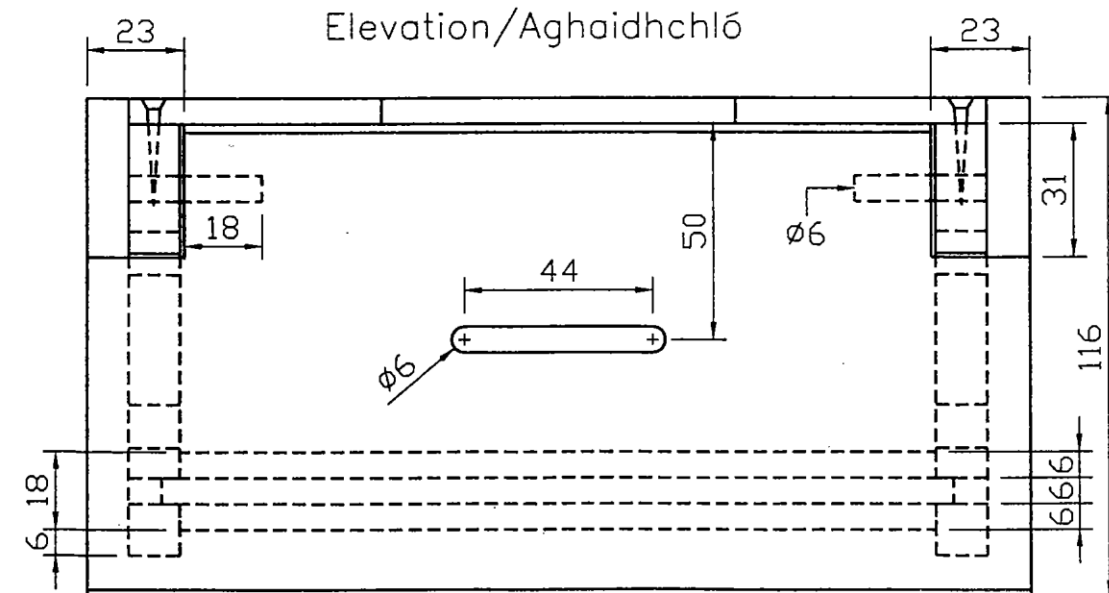


Money Box/Bosca Airgid

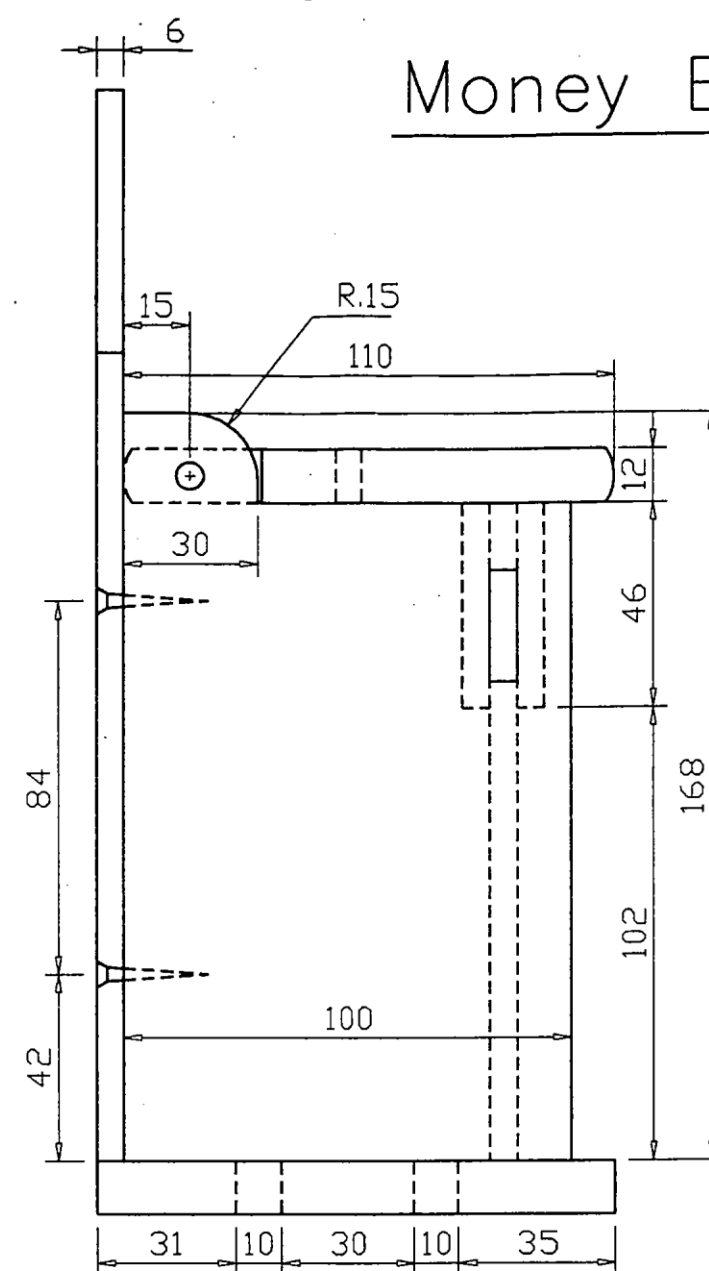
2001



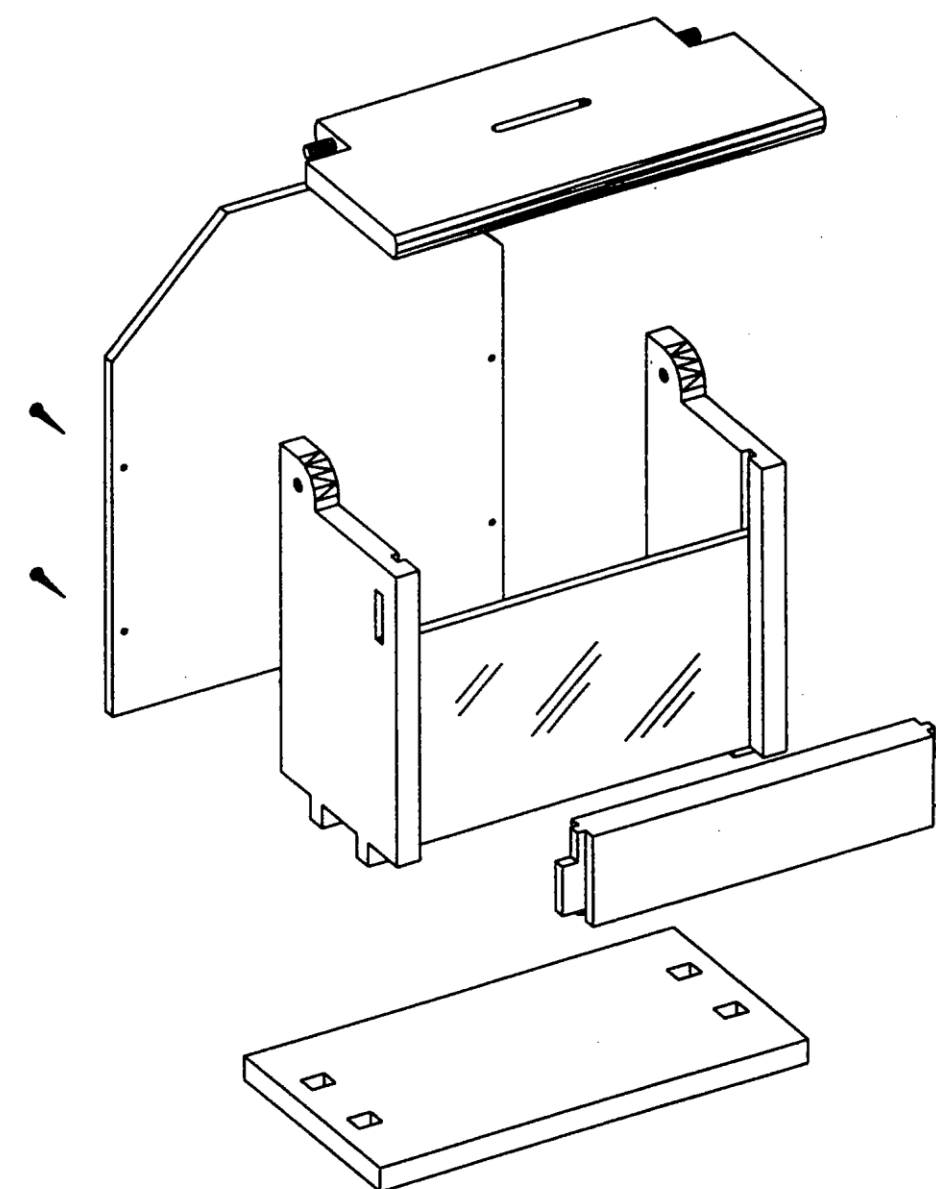
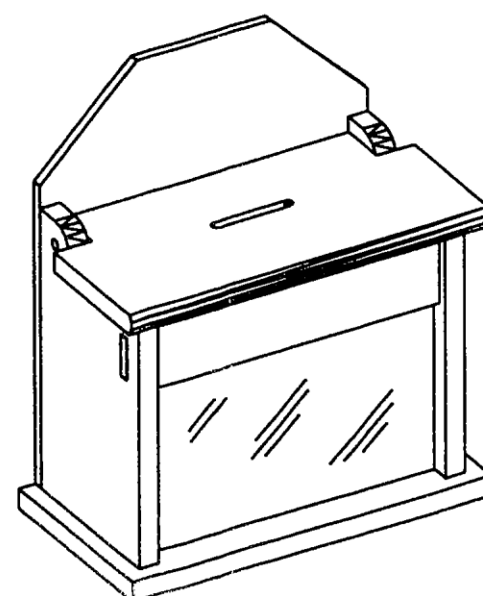
Elevation/Aghaidhchló



Plan/Bunchló



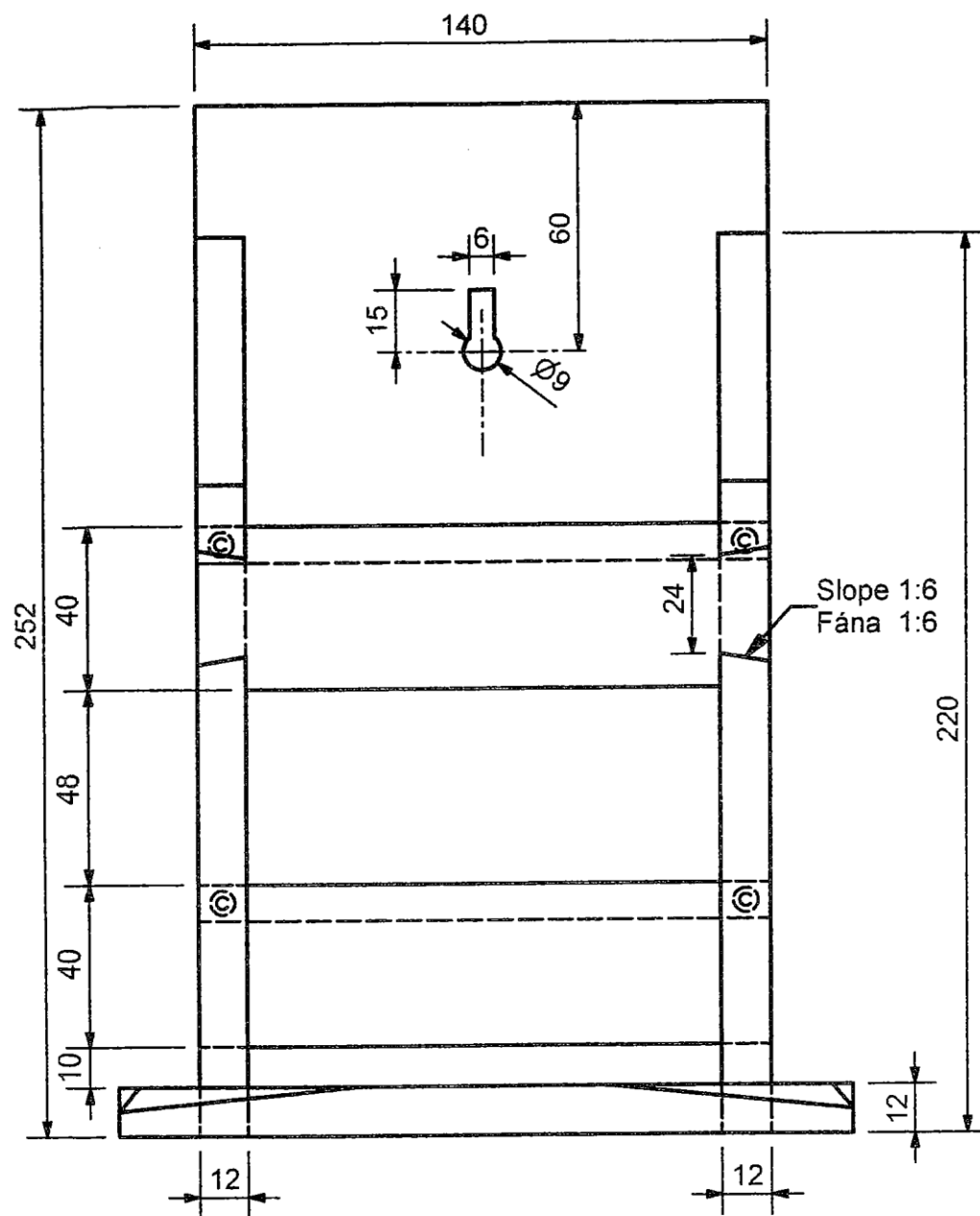
End Elevation/Taobhchló



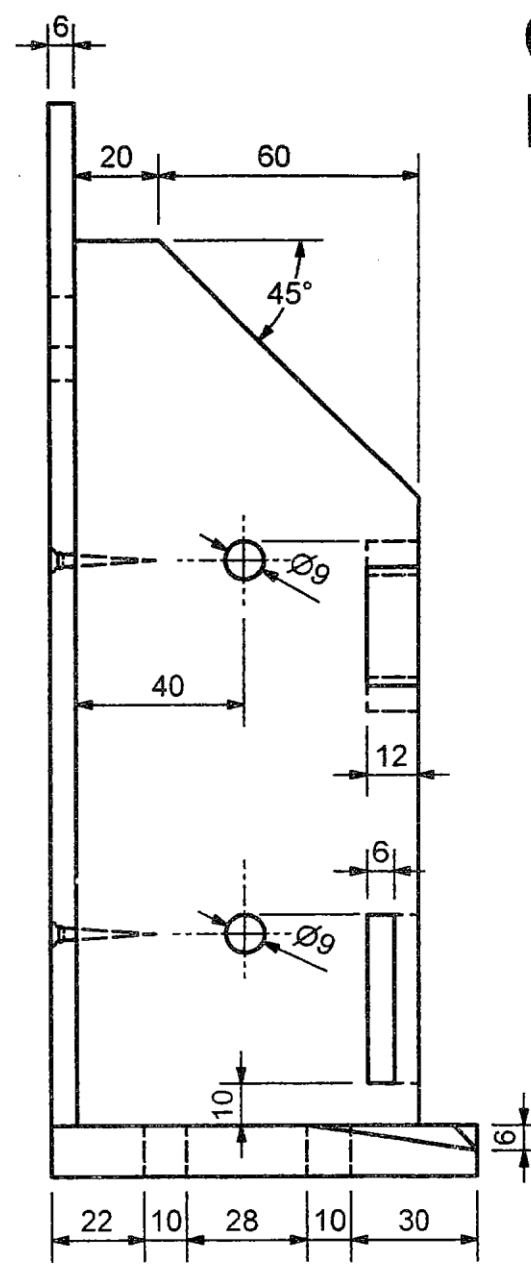
Shaping of edge of base is left to candidate
Fágтар cruth imeall an bhoinn faoin iarrthóir

Cutlery Box Bosca do Sceanra

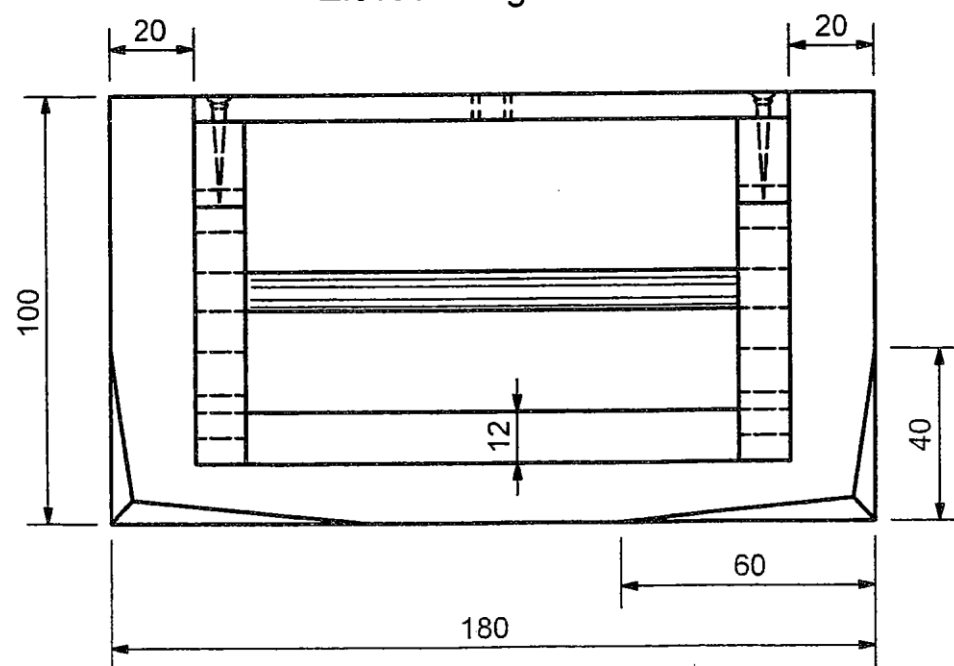
2002



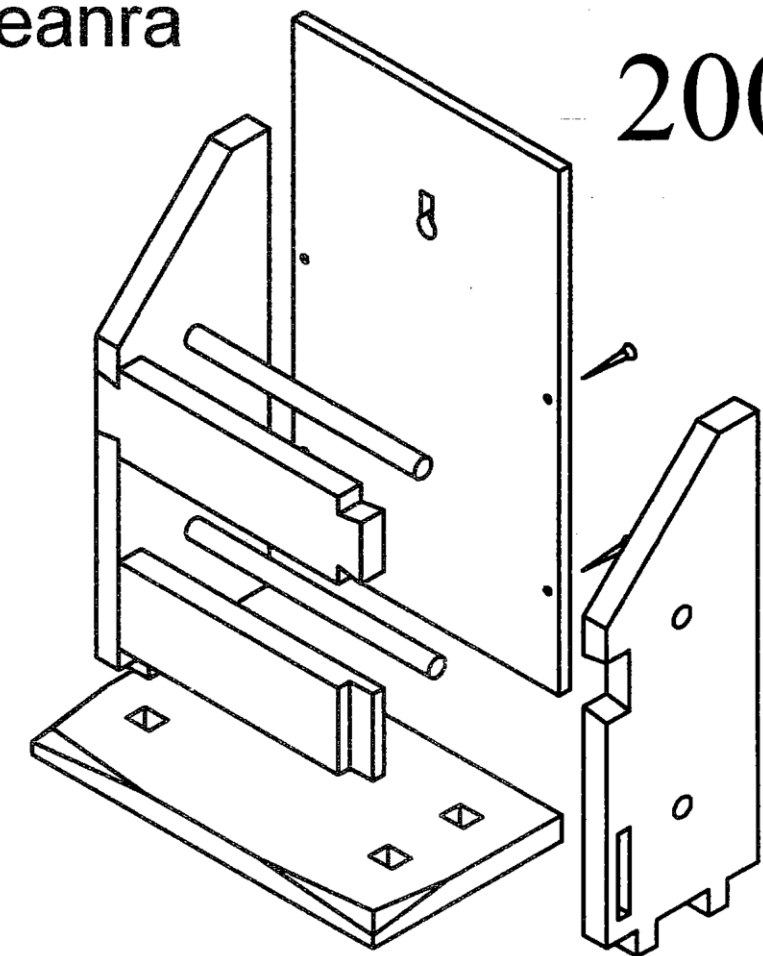
Elevation/Aghaidhchló



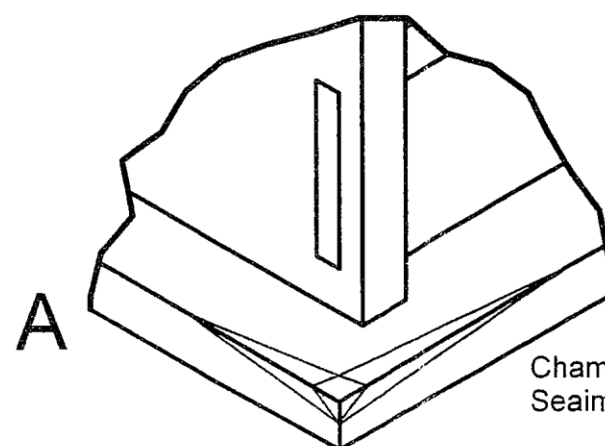
End Elevation/Taobhchló



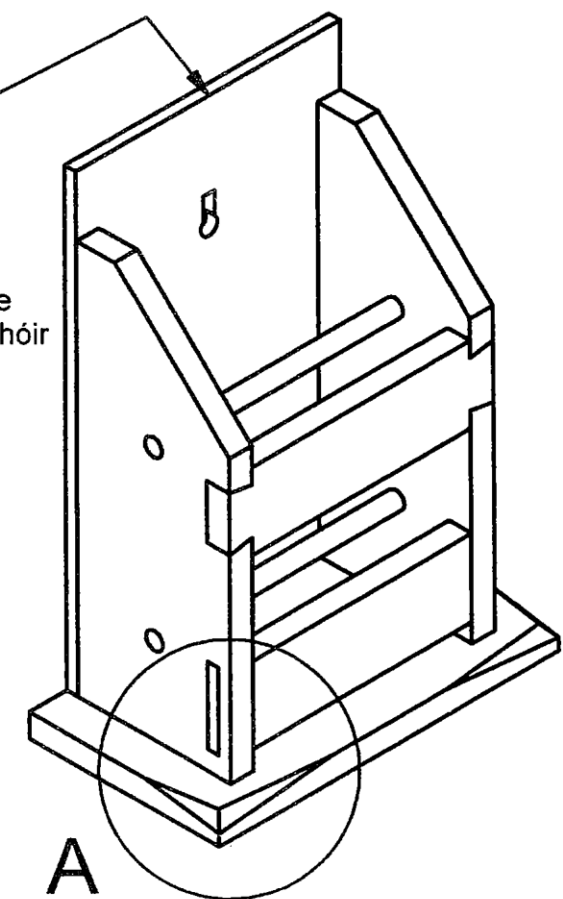
Plan/Bunchló



Design and shaping of back is left to candidate
Fágfar dearadh agus cruth an chúl faoin iarrthóir

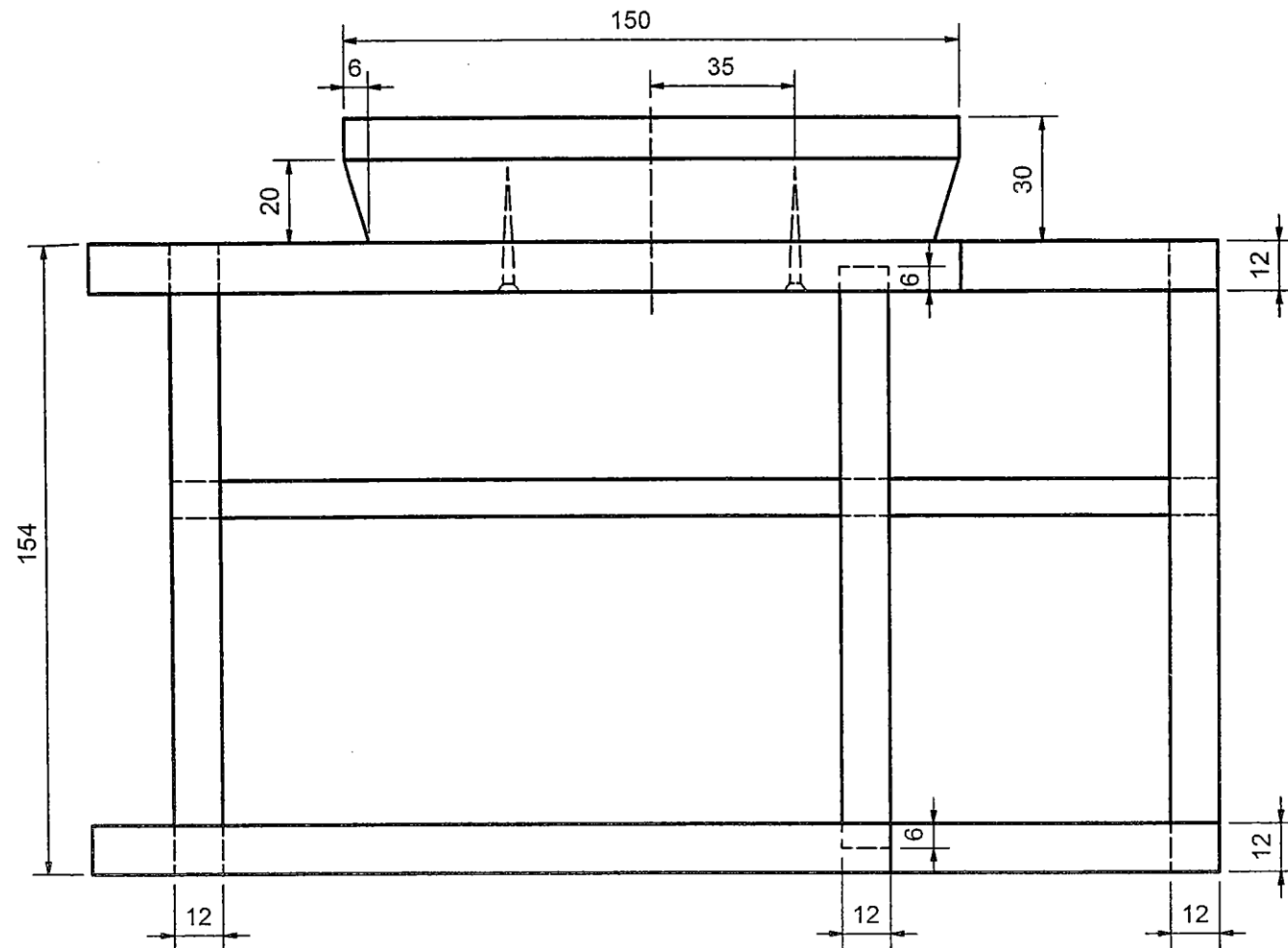


Chamfers at corner 6 x 6
Seaimféir ag an gcúinne 6 x 6

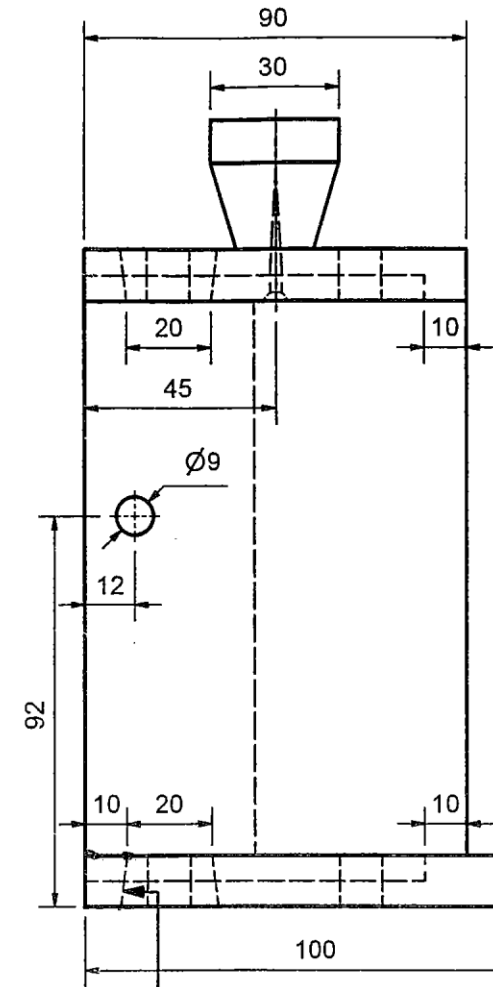


Compact Disc Holder / Coimeádán do Dhlúthdhioscaí

2003

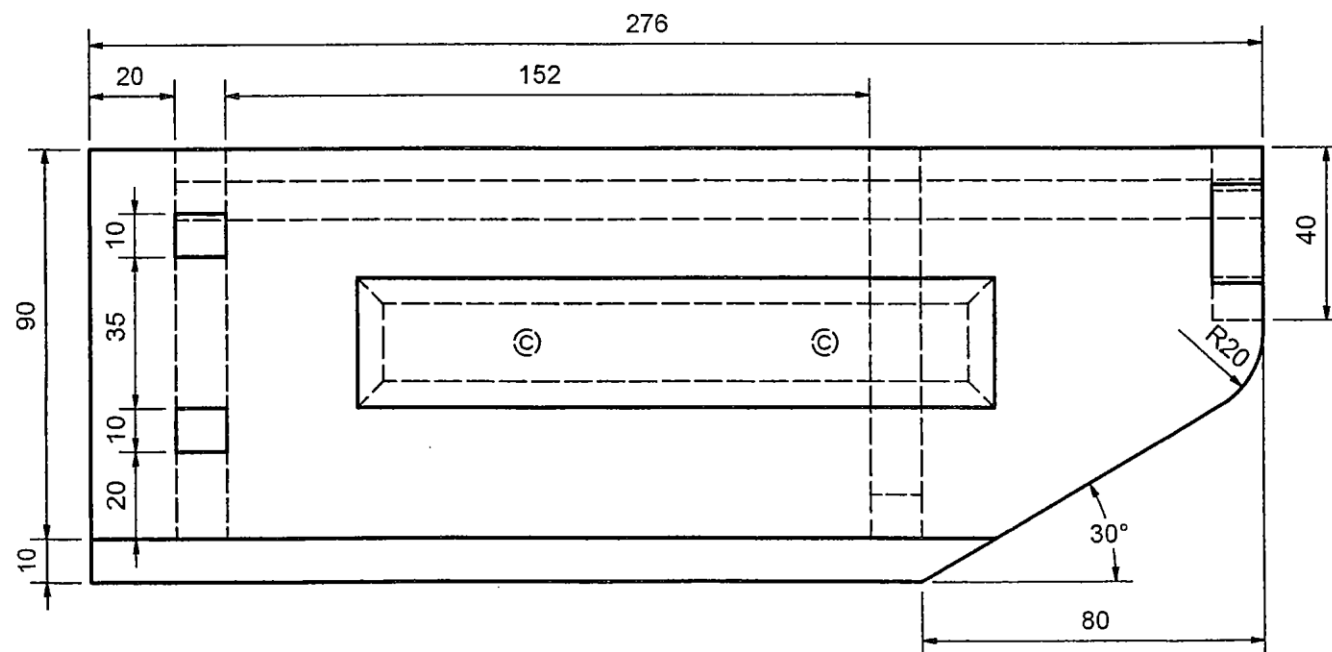
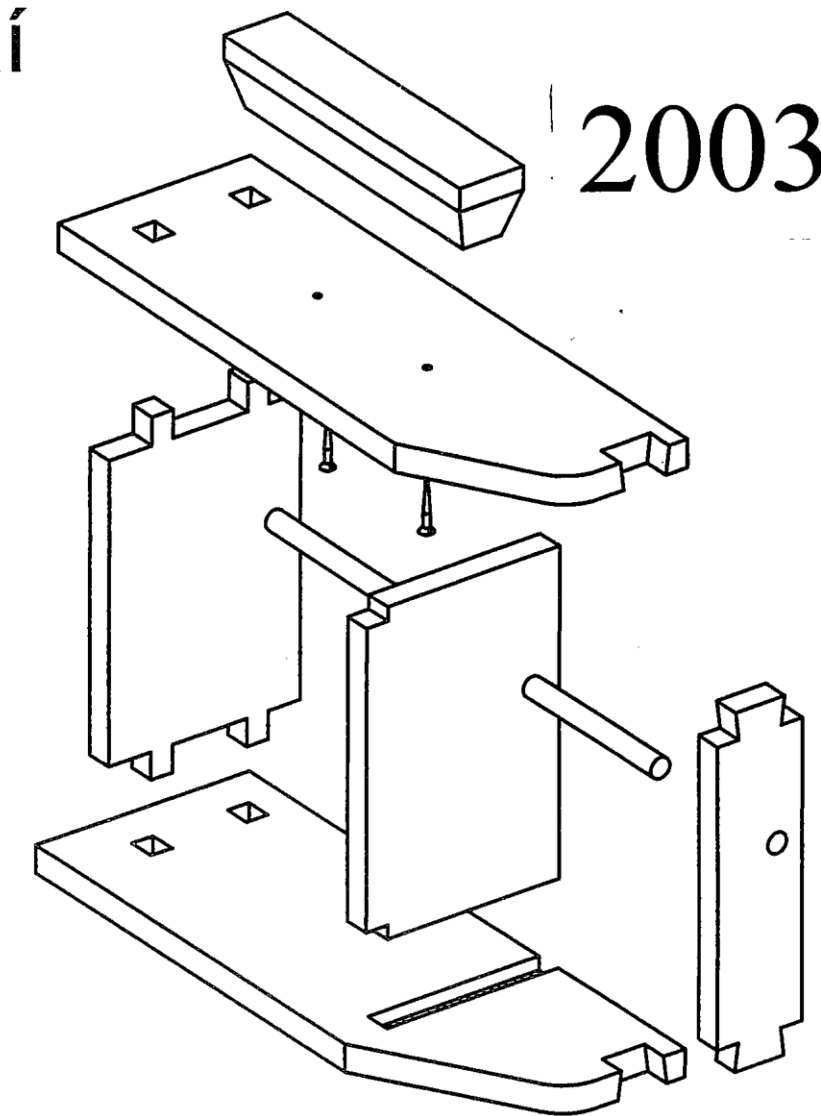


Elevation/Aghaidhchló

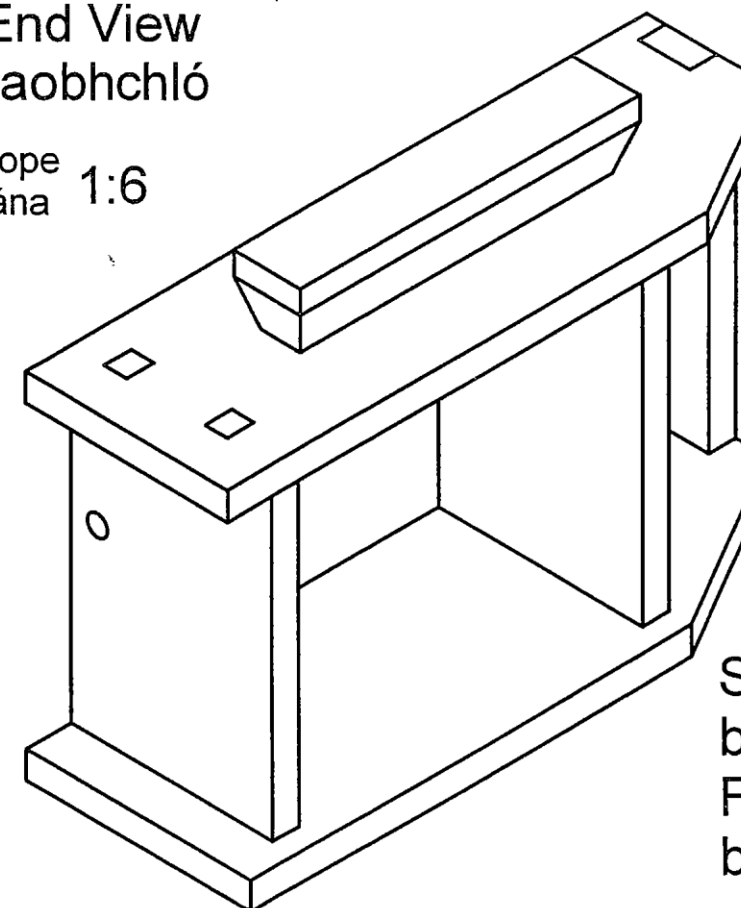


End View
Taobhchló

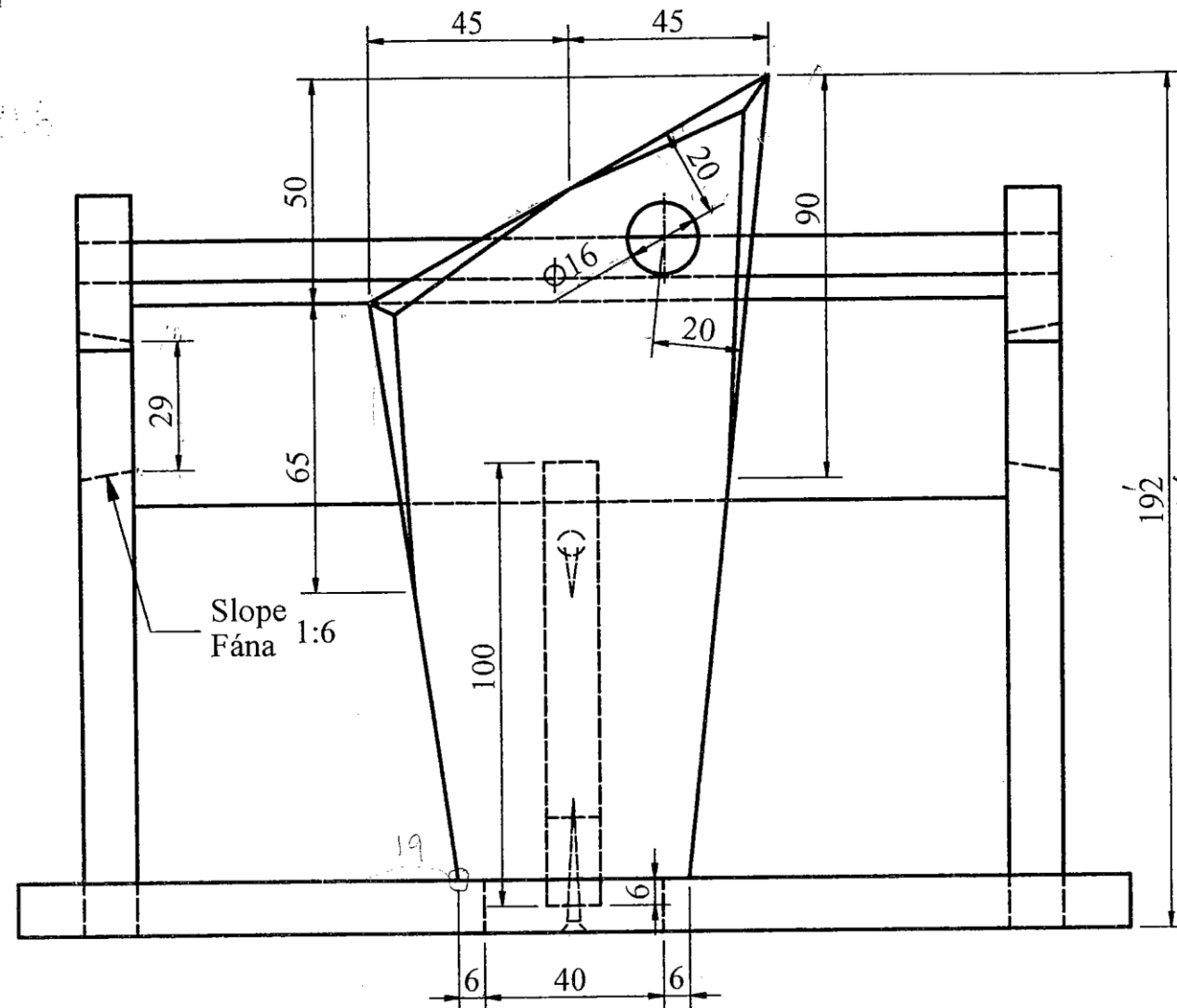
Slope
Fána 1:6



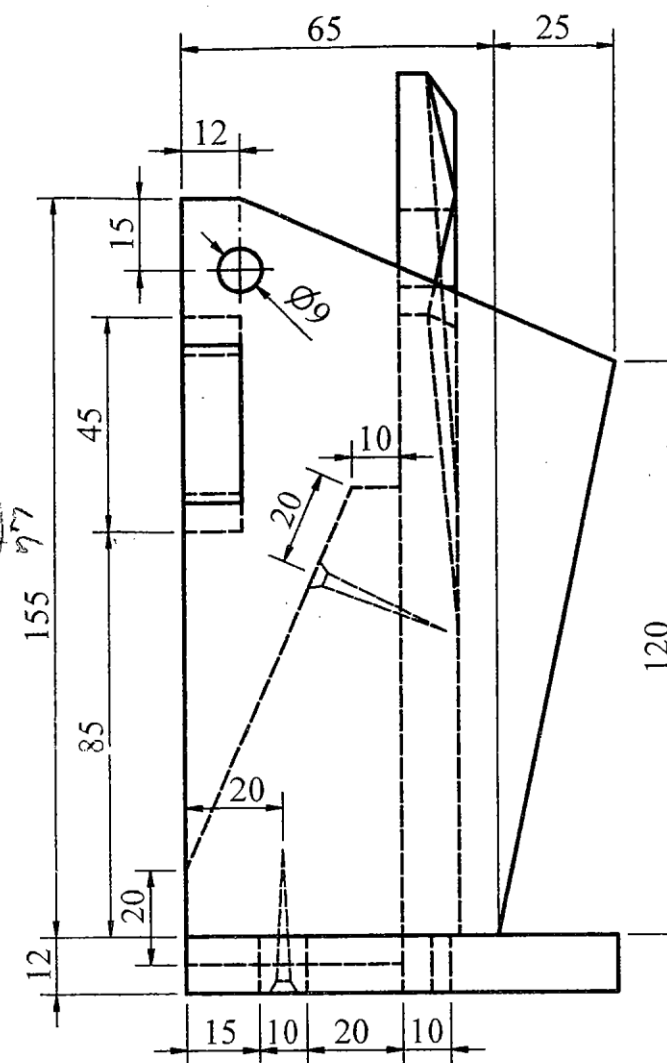
Plan/Bunchló



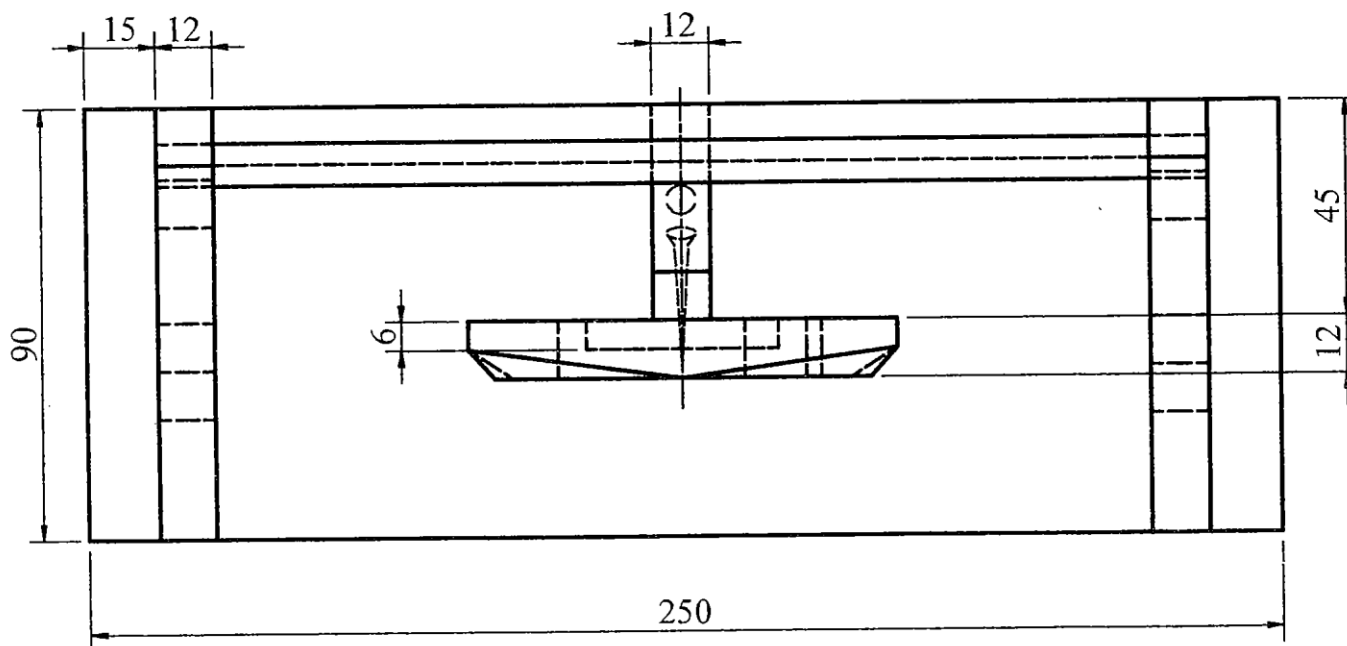
Shaping of edge of
base is left to candidate
Fágтар cruth imeall an
bhoinn faoin iarthóir



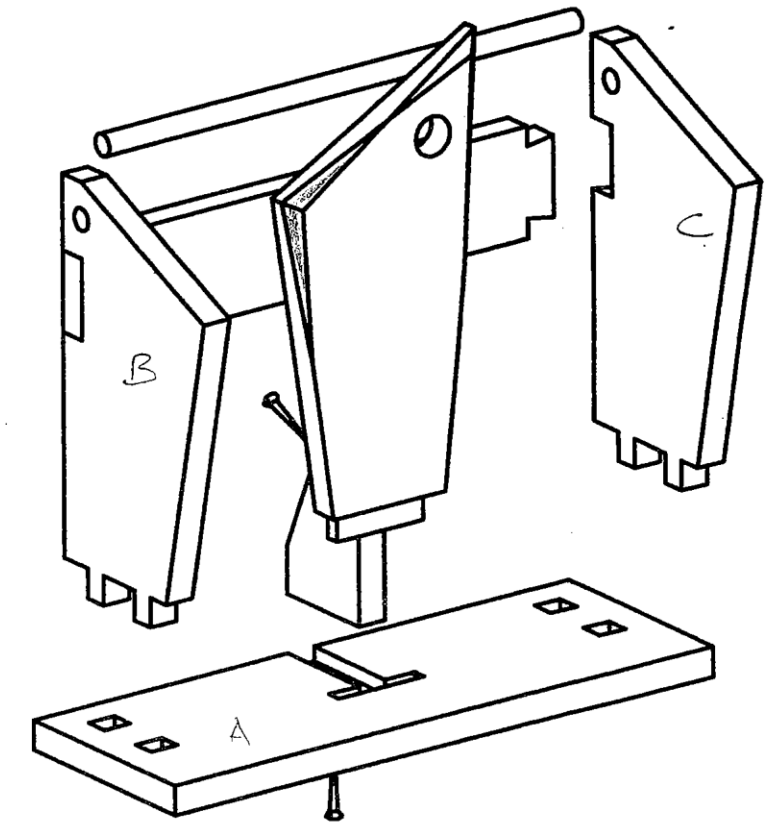
Elevation/Aghaidhchló



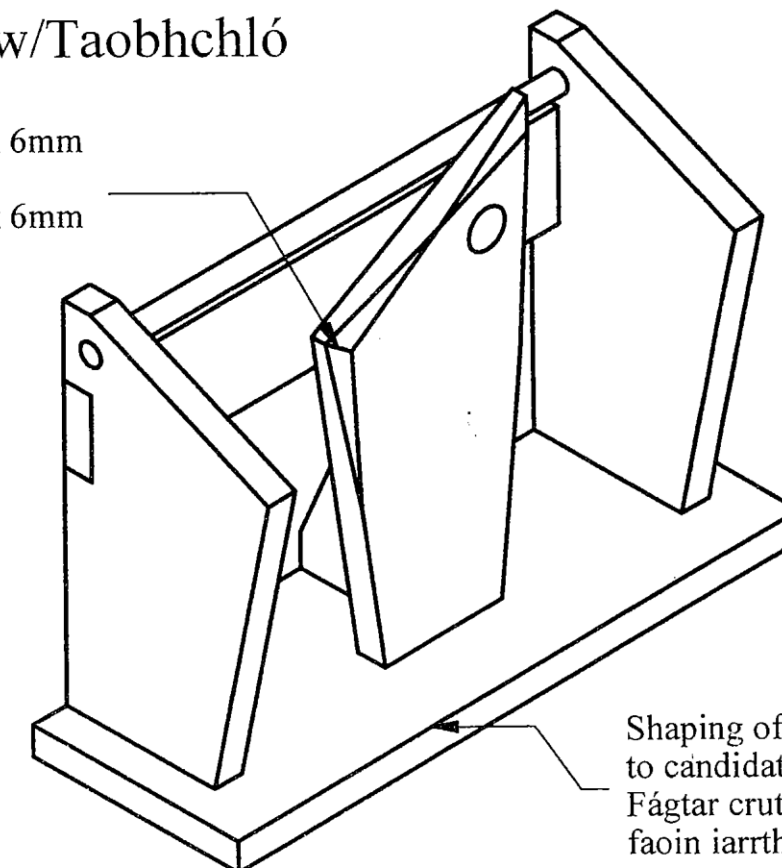
End View/Taobhchló



Plan/Bunchló



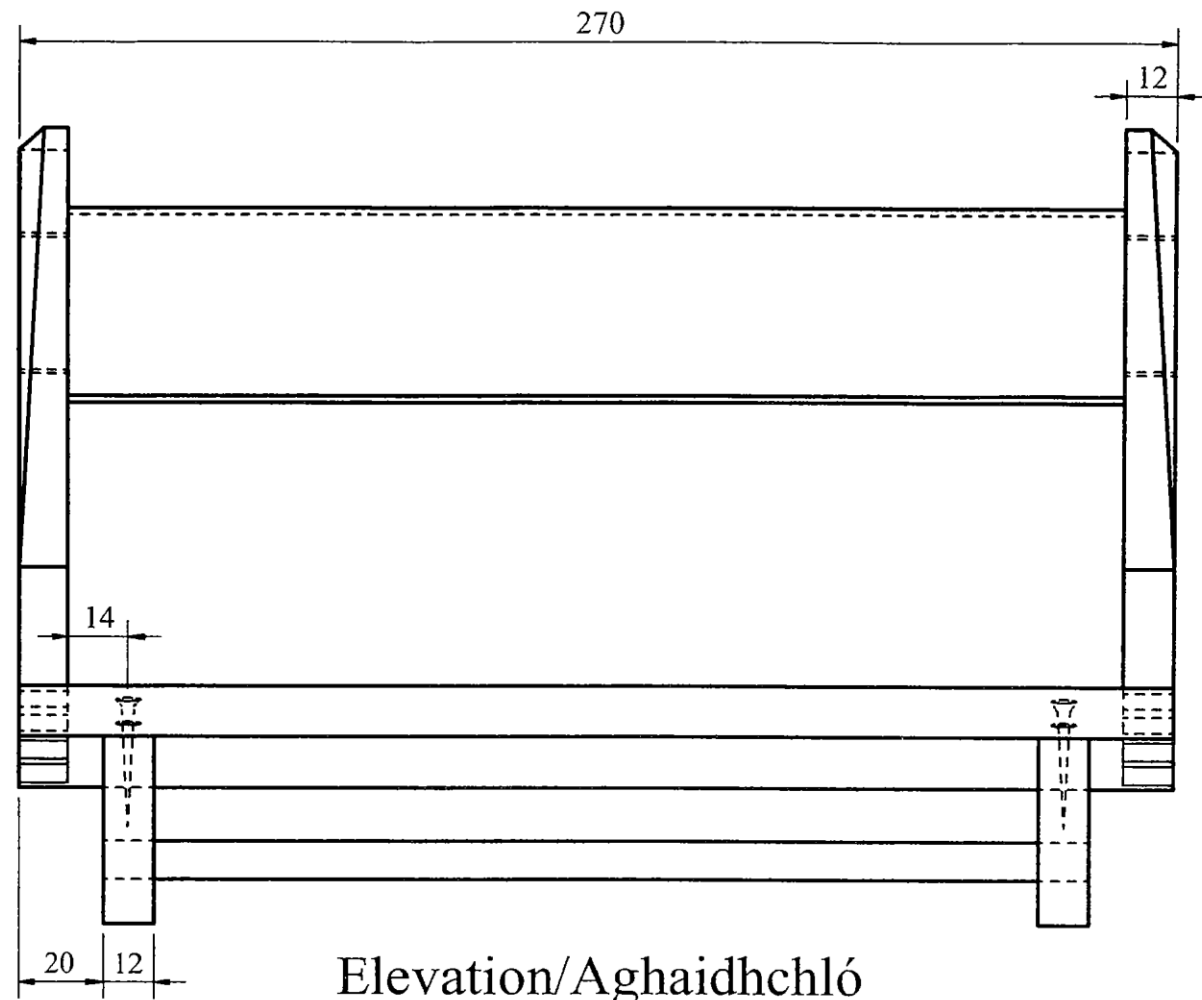
Chamfers 6mm x 6mm
at the corner
Seaimféir 6mm x 6mm
ag an gcúinne



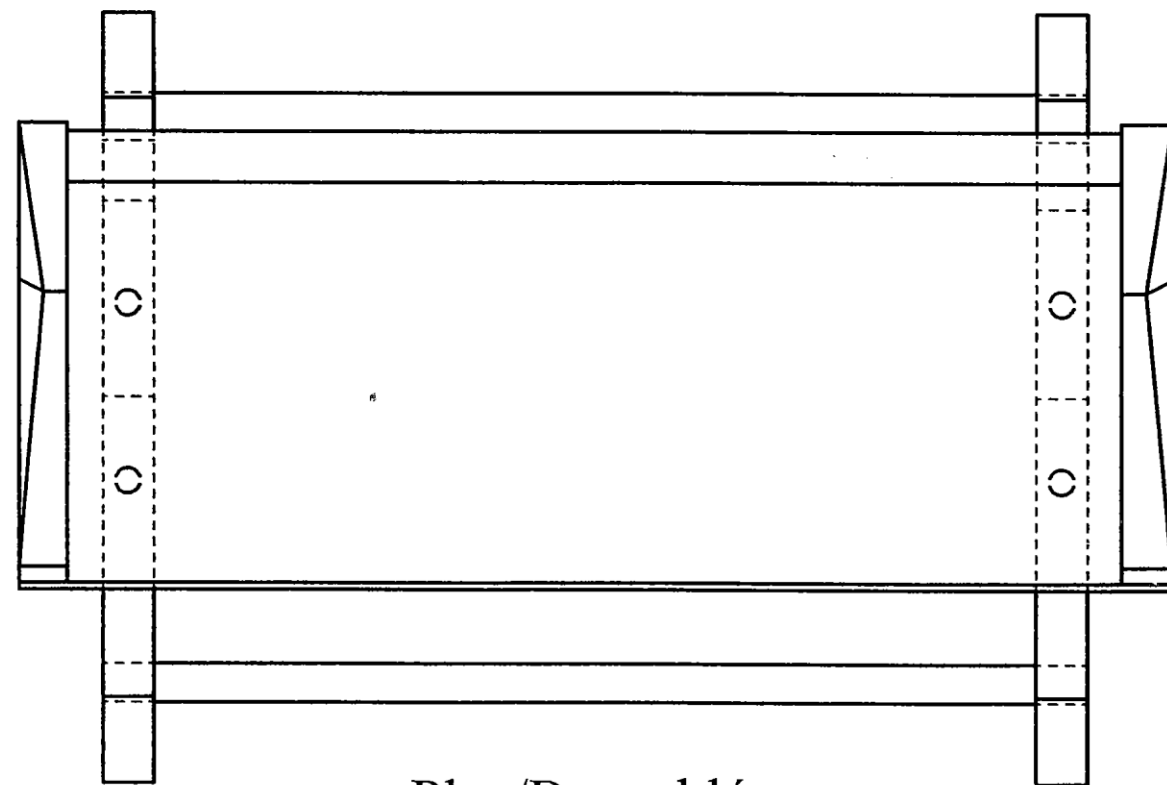
Shaping of edge of base is left
to candidate
Fágтар cruth imeall an bhoinn
faoin iarrthóir

M77L(T)

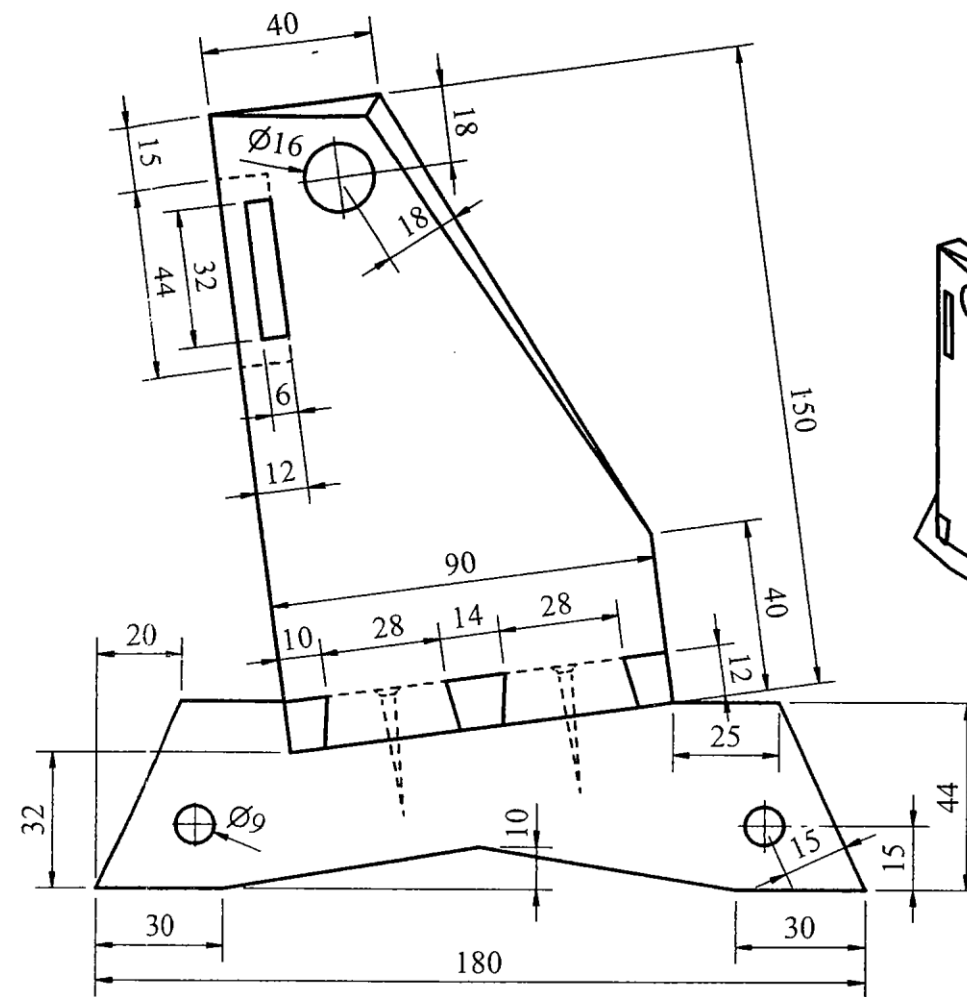
DVD Stand/Seastán do D 2005



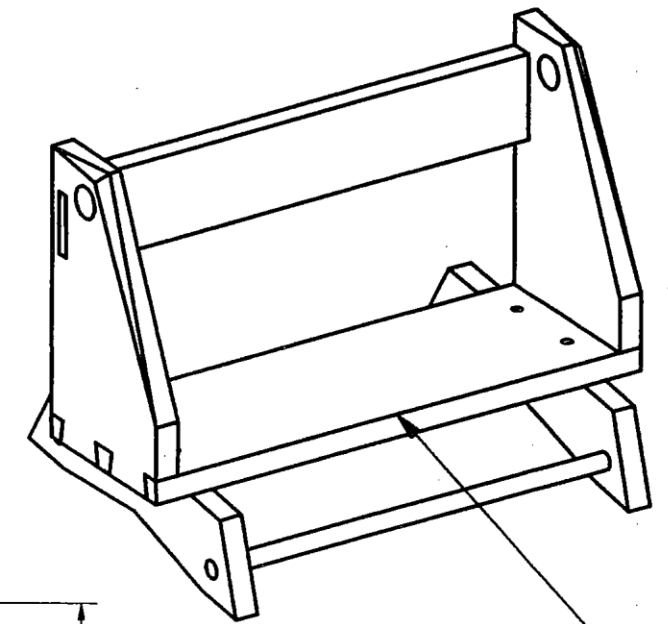
Elevation/Aghaidhchló



Plan/Bonnló



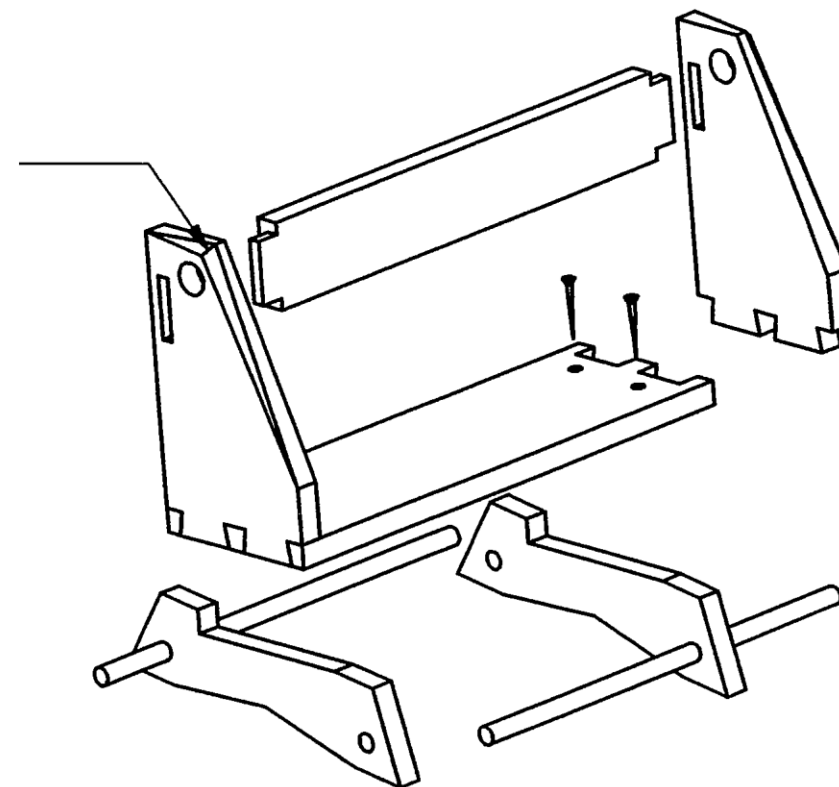
End View/Taobhchló



Shaping of edge of base is left to candidate

Fágtar cruth imeall an bhoinn faoin iarrthóir

Chamfers 6mm x 6mm at
the corner
Seaimféir 6mm x 6mm ag
an gcuinne

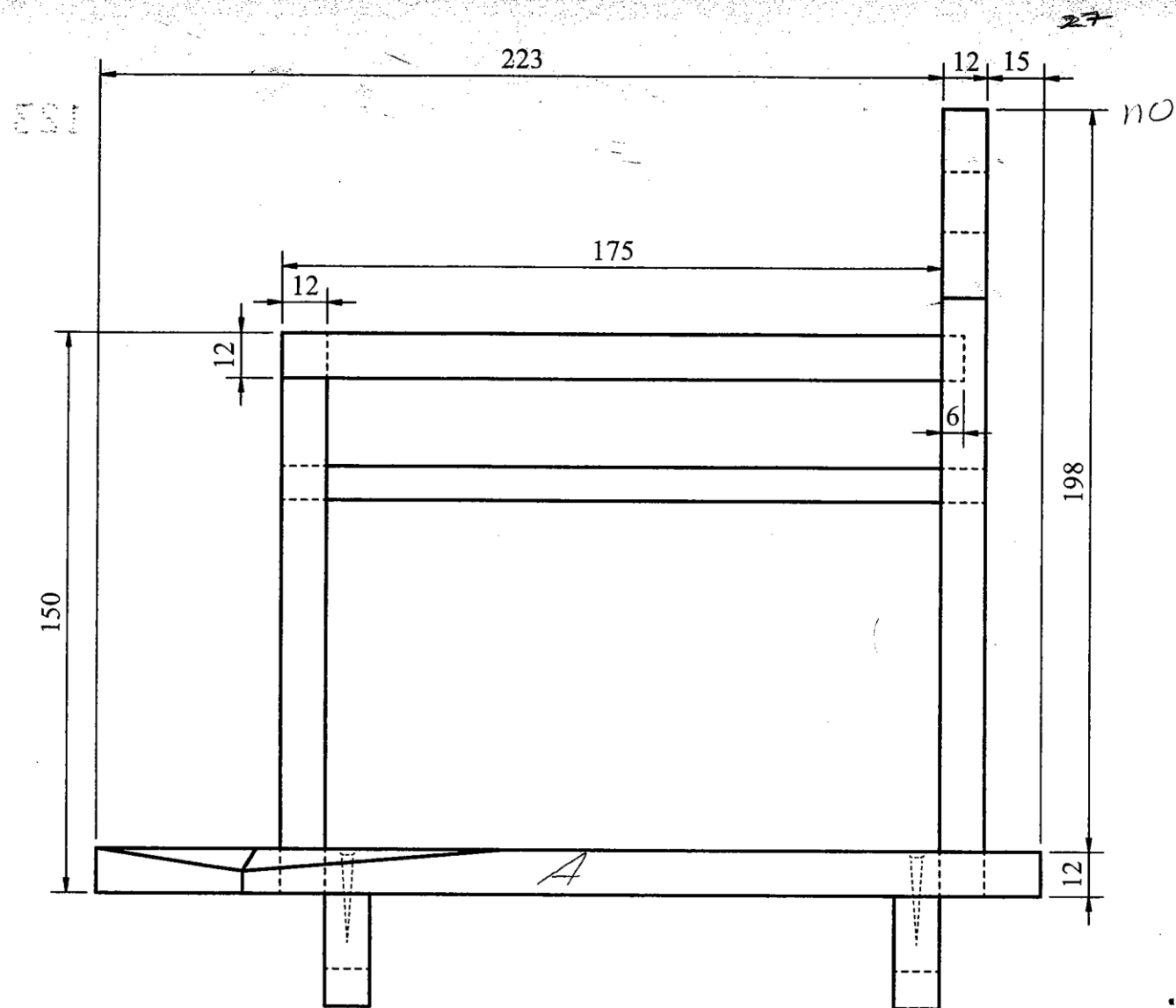


Note: Slope of dovetail/ **1:6**
 Nóta: Fána an dhéadailt

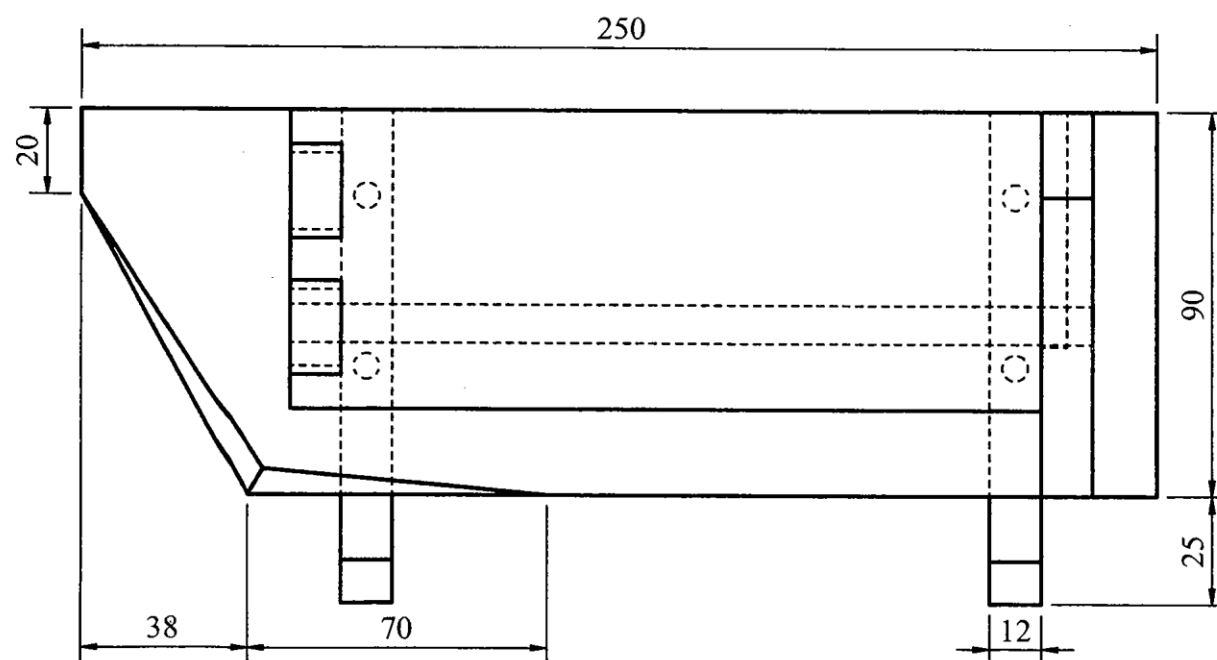


Display Stand/Seastán Taispeántais

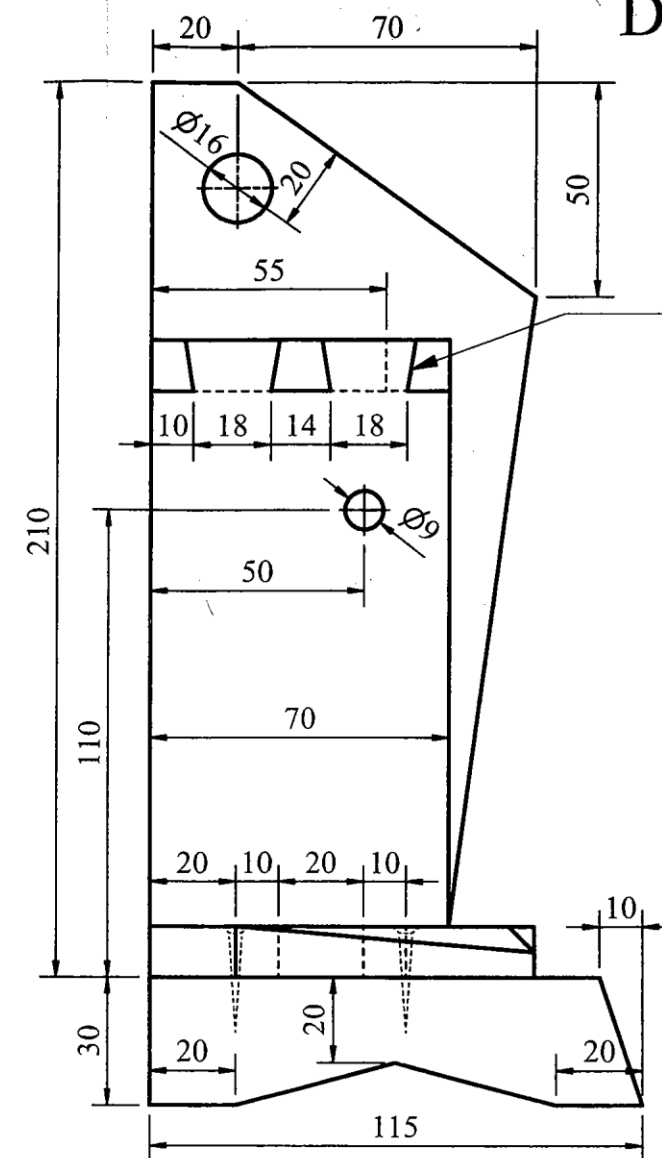
2006



Elevation/Aghaidhchló

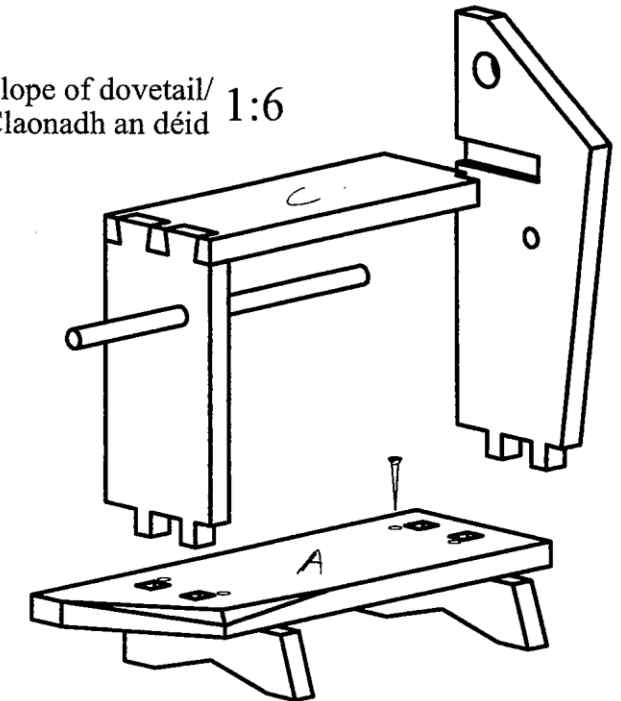


Plan/Bonnchló

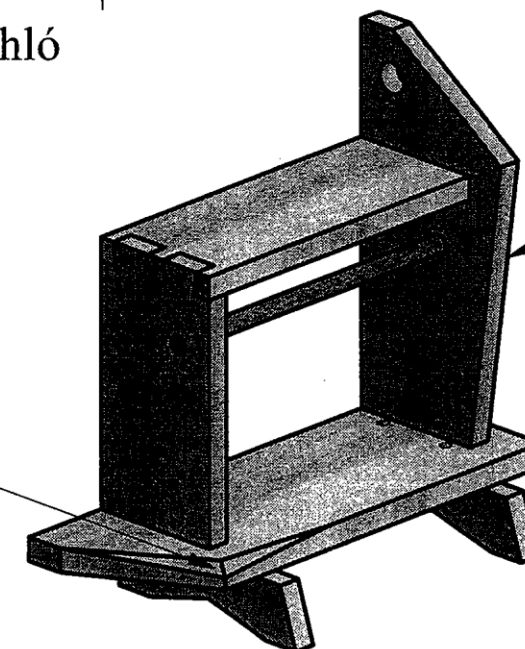


End View/Taobhchló

Note: Slope of dovetail/
Nóta: Claonadh an déid 1:6



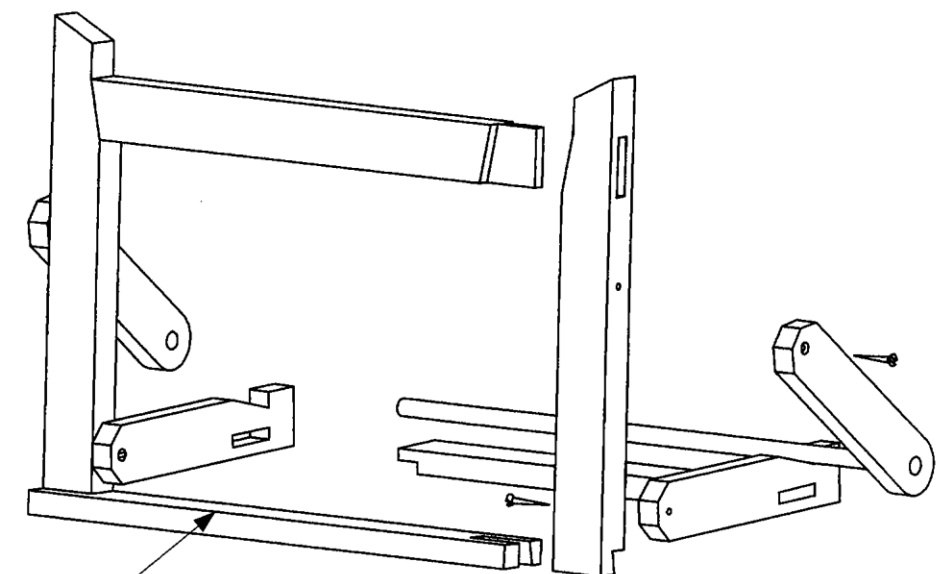
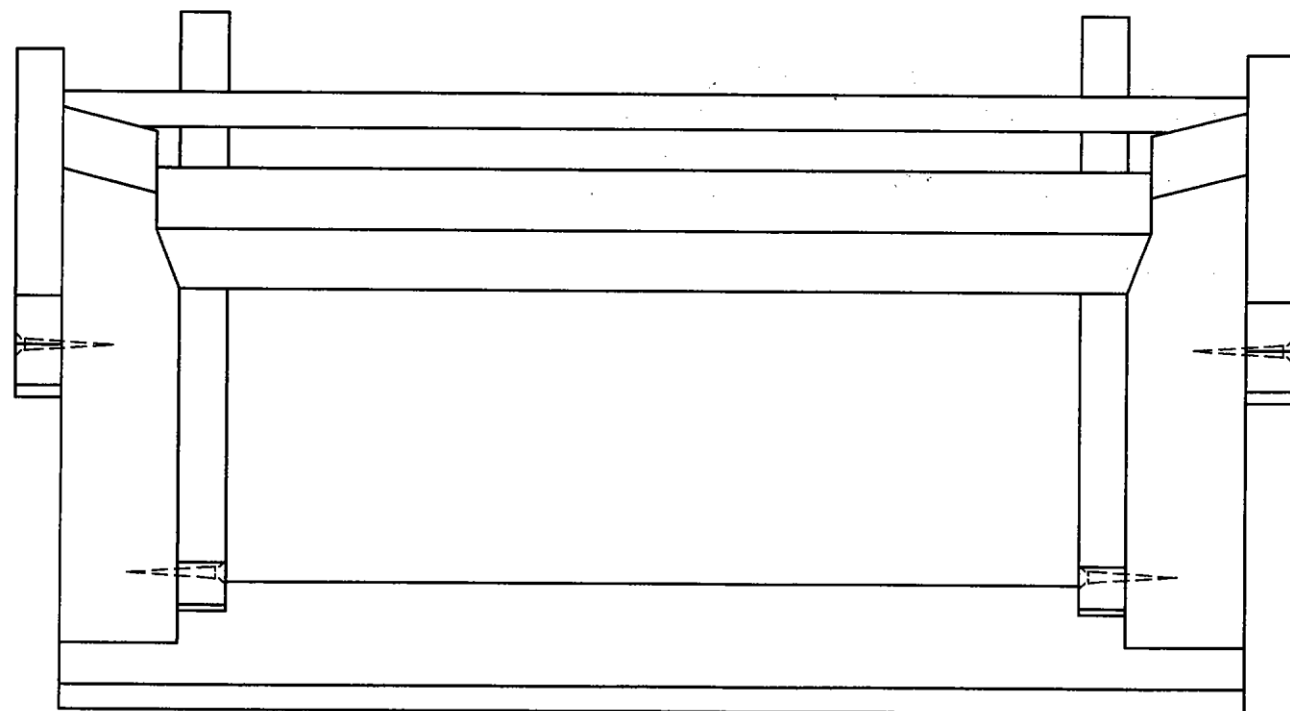
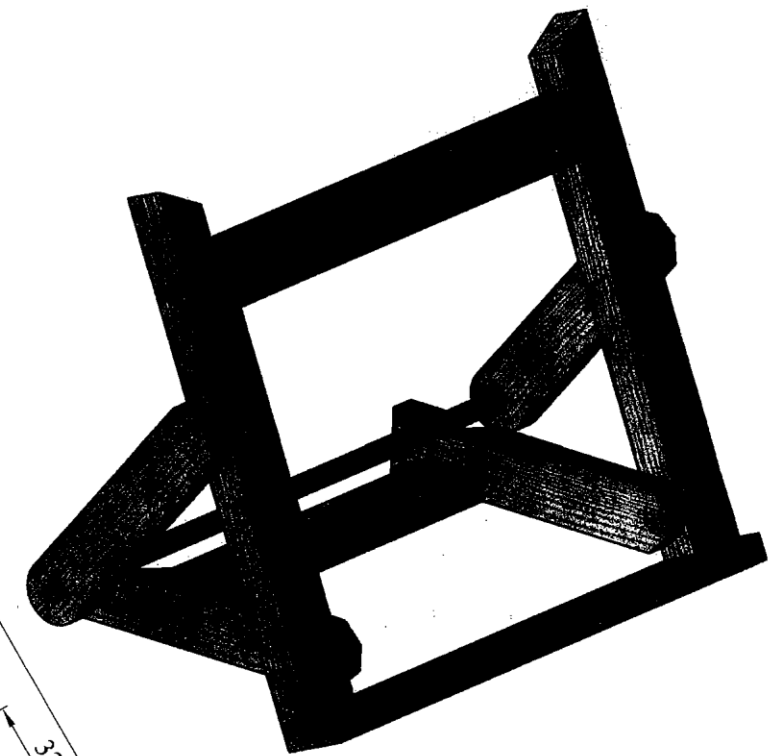
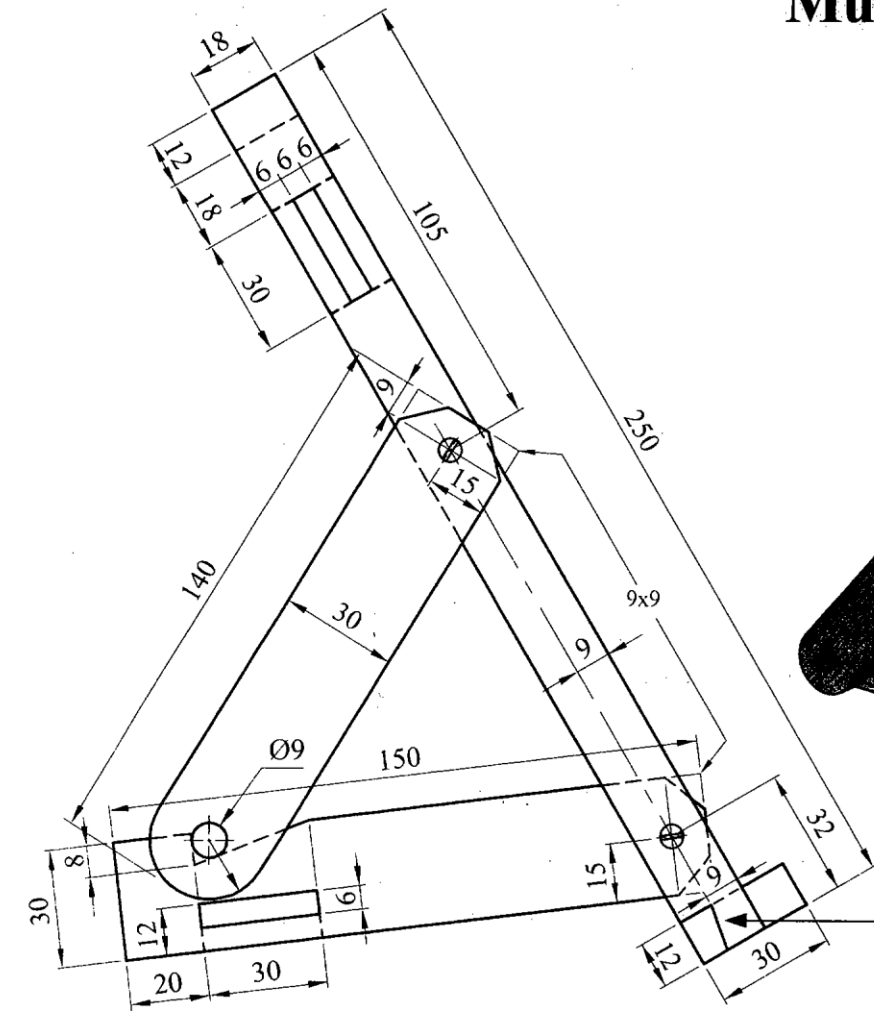
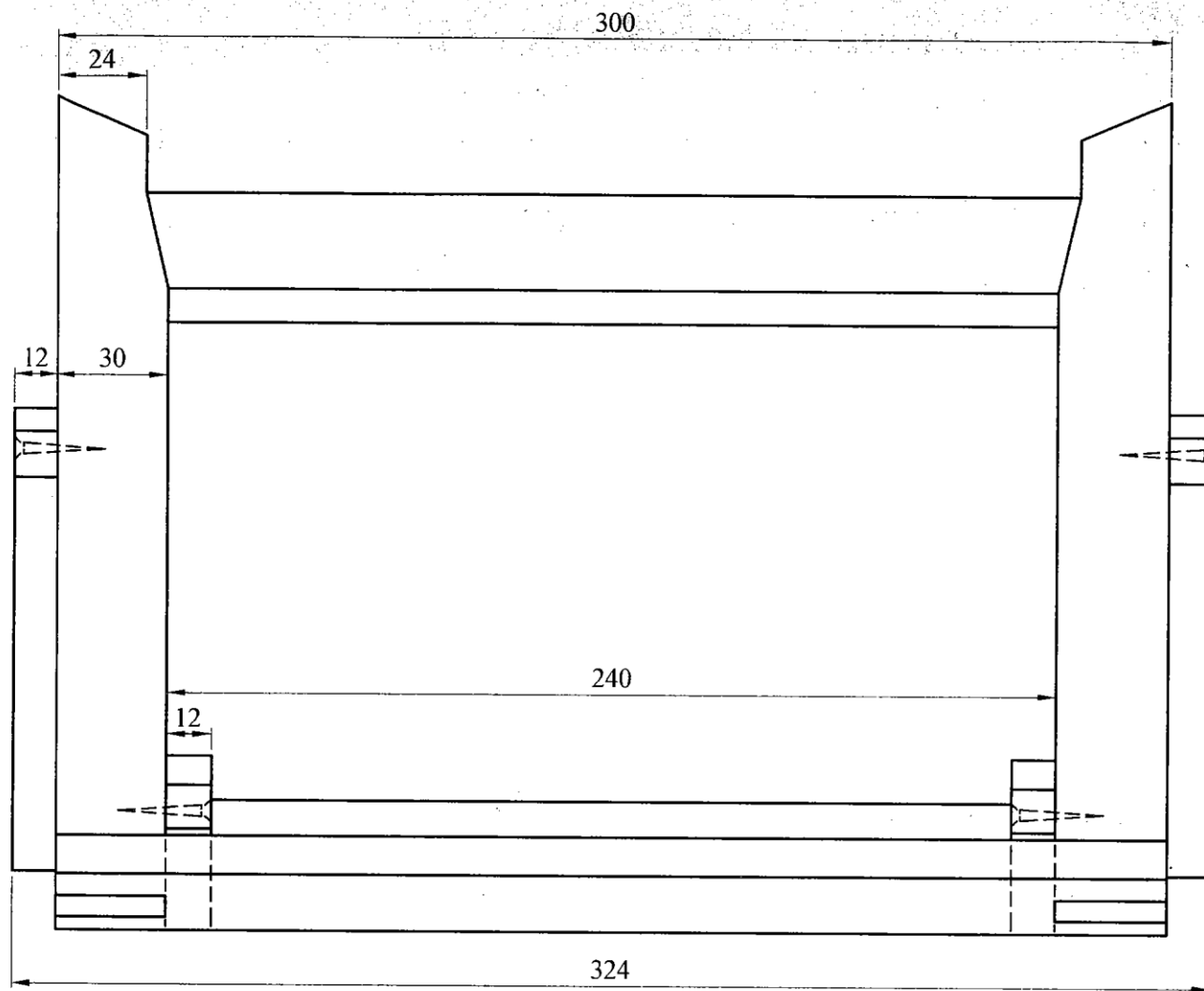
Chamfers 6mm x 6mm
at the corner
Seaimféir 6mm x 6mm
ag an gcúinne



Shaping of edge of this
side is left to candidate
Fágfar cruth imeall an
taoibh seo faoin iarrthóir

Note: Hand up this examination paper to the **Superintendent** at the end of the examination

Nóta: Tabhair ar ais an scrúdpháipéar seo don **Fheitheoir** ag deireadh an scrúdaithe

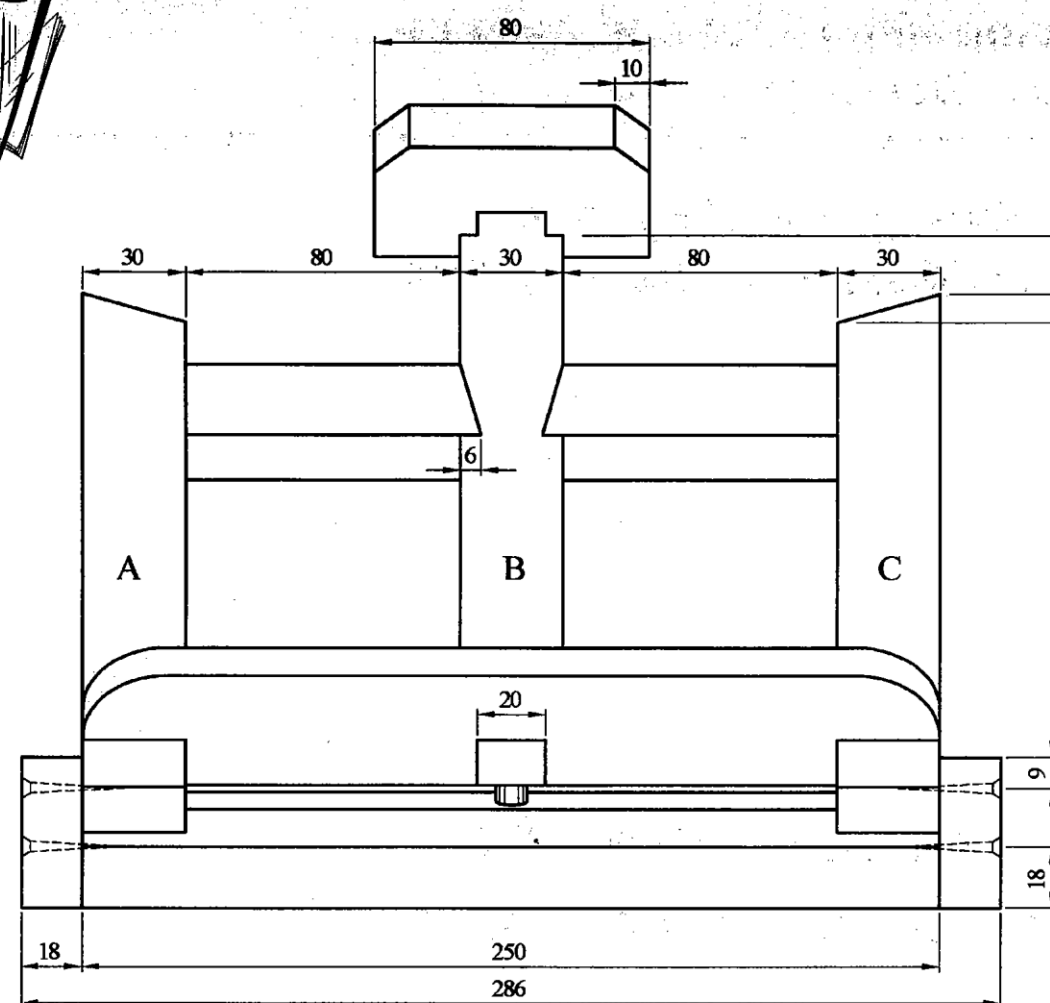


Note: Hand up this examination paper to the
Superintendent at the end of examination.

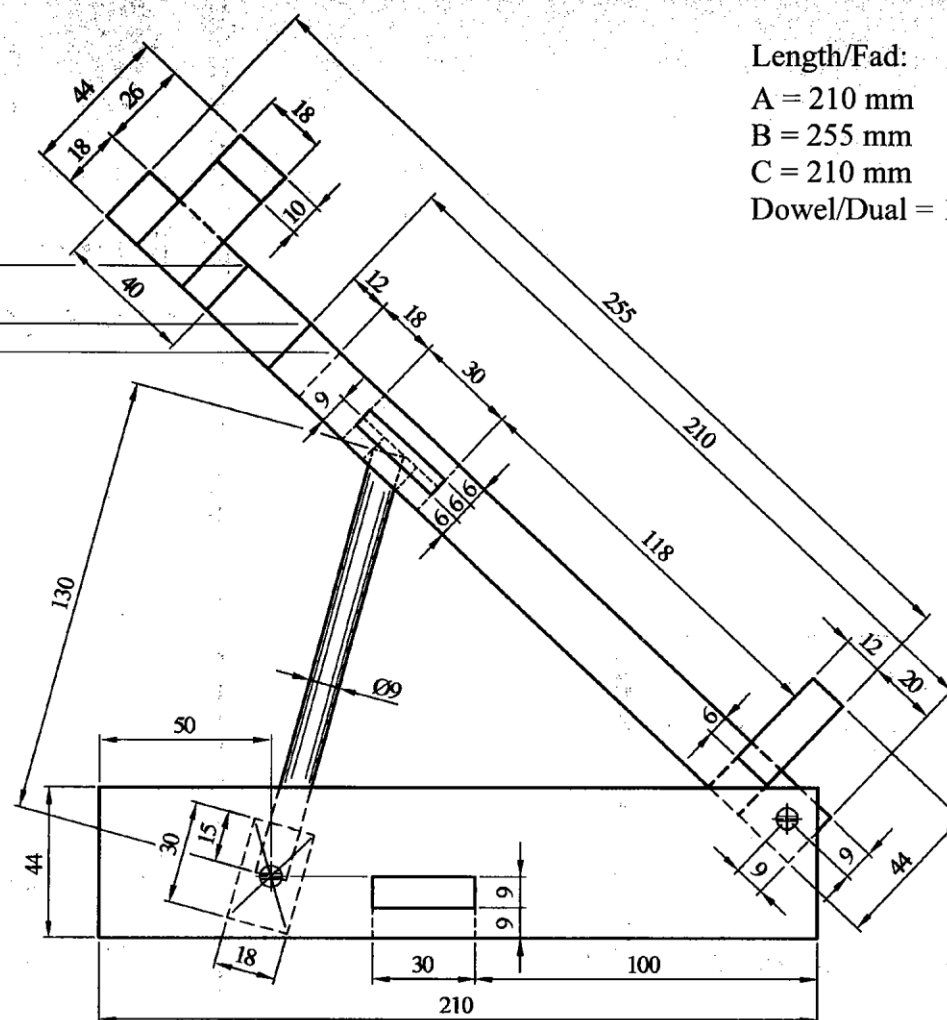
Nóta: Tabhair ar ais an scrúdpháipéar seo don **Fheidteoir** ag deireadh an scrúdaithe.



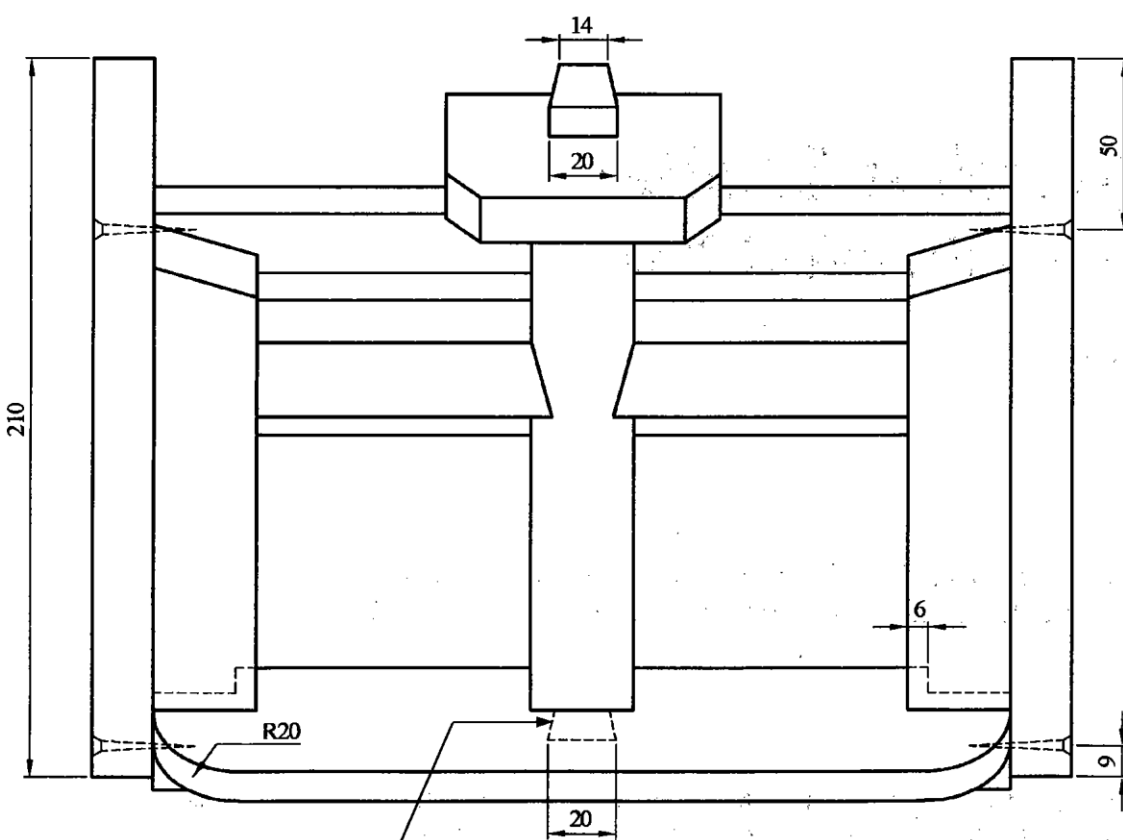
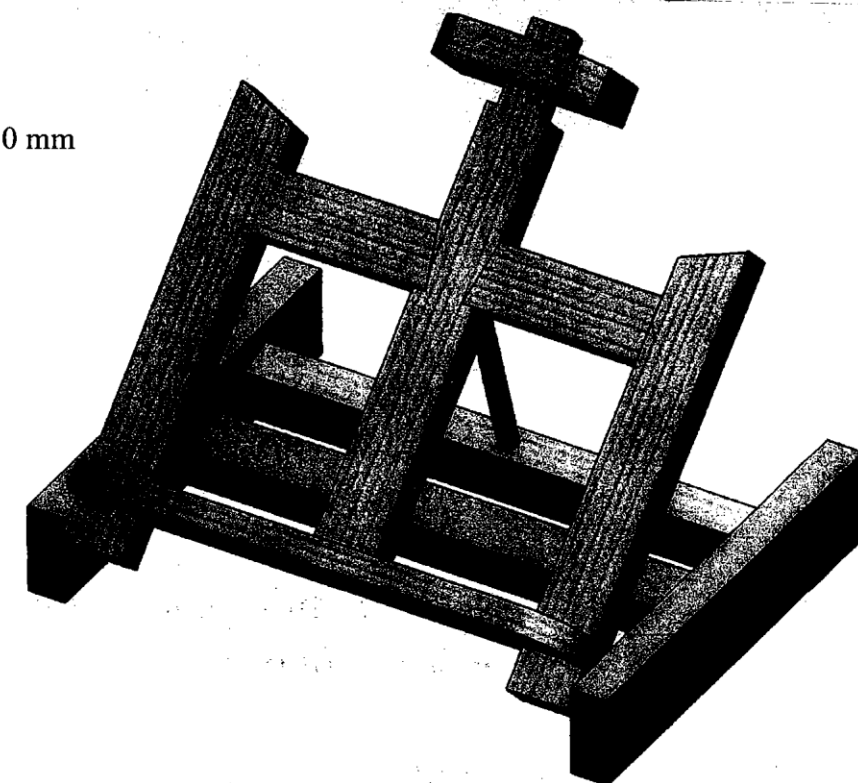
Length/Fad:
 A = 210 mm
 B = 255 mm
 C = 210 mm
 Dowel/Dual = 130 mm



Elevation/Aghaidhchló



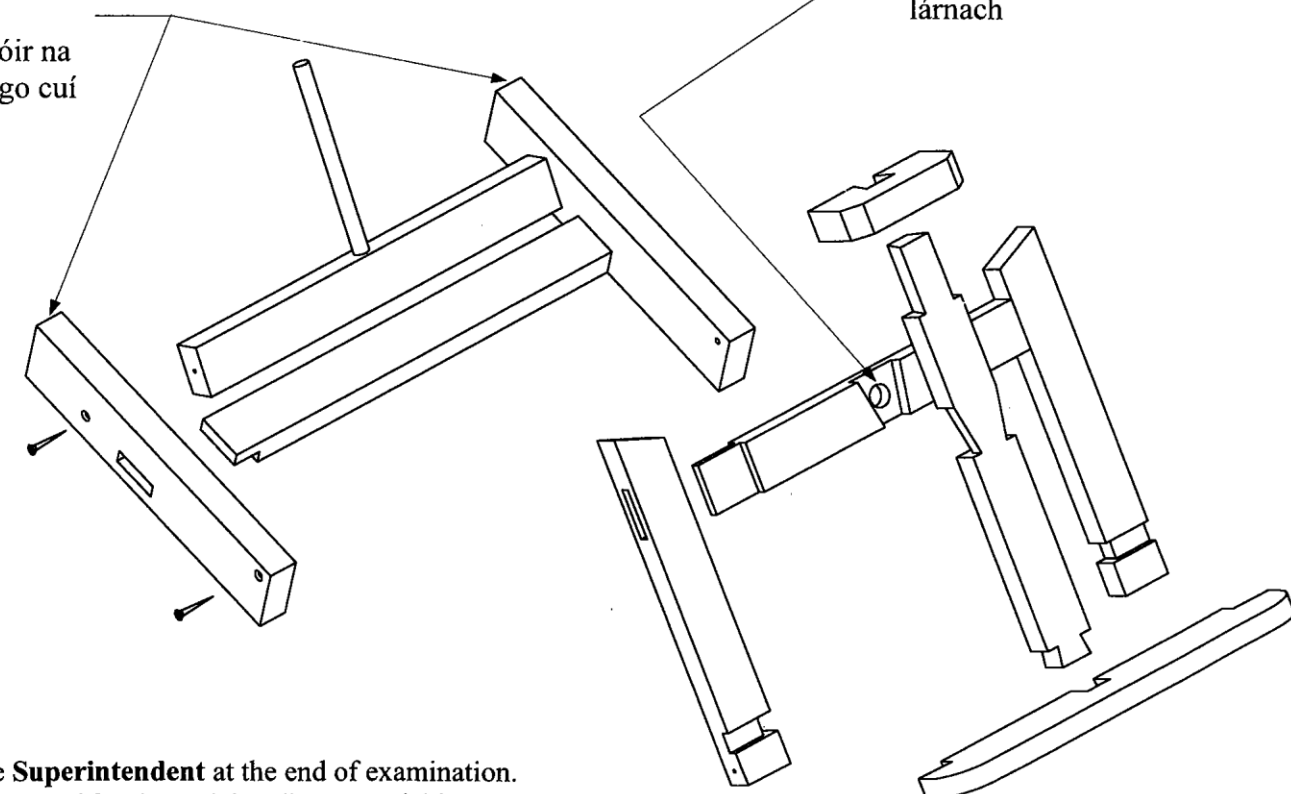
End View/Taobhchló



Plan/Bonnchló

Slope of Dovetail
 Claonadh an Déadailt 1:6

Shaping of edges is left to
 the candidate
 Fágtar faoin iarrthóir na
 gcorr a chríochnú go cuí



Ø13mm hole, centrally
 located
 An poll, Ø13mm, suite go
 lárnach

Note: Hand up this examination paper to the **Superintendent** at the end of examination.
Nóta: Tabhair ar ais an scrúdpháipéar seo don **Fheitheoir** ag deireadh an scrúdaithe.